

MATERIA

COLLECTION
LUXURY DECOR AND BESPOKE SOLUTIONS



COLLECTIONIST CABINET

LAURAMERONI
design . collection





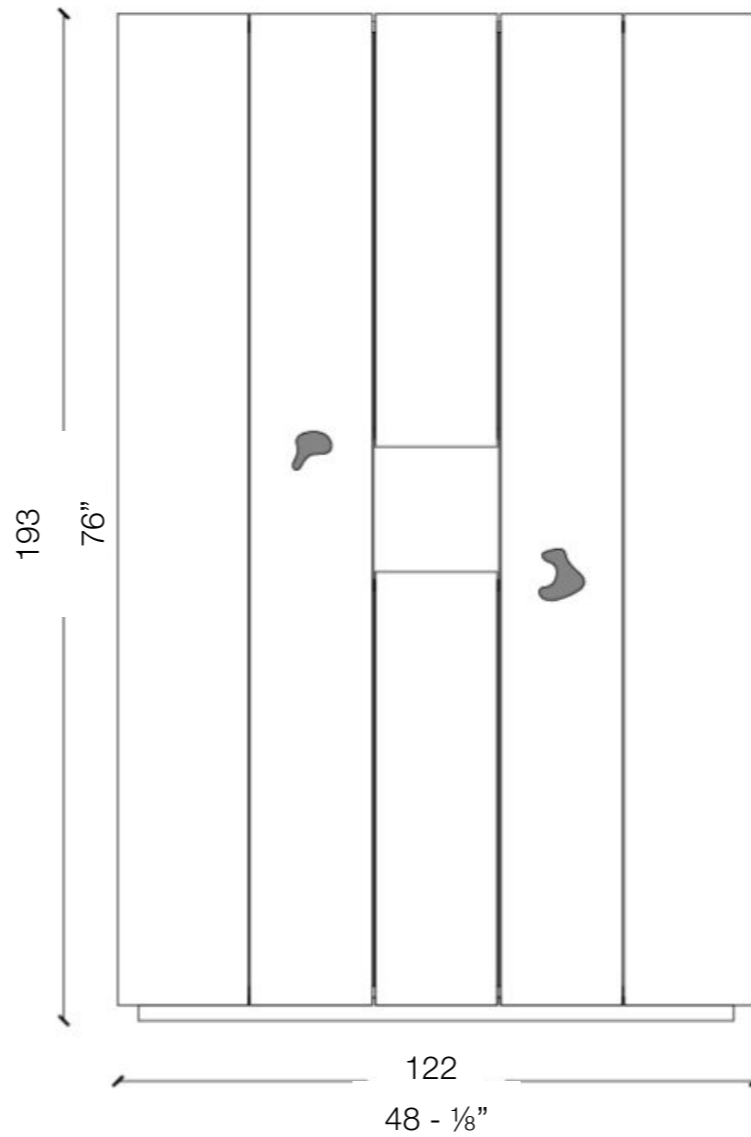
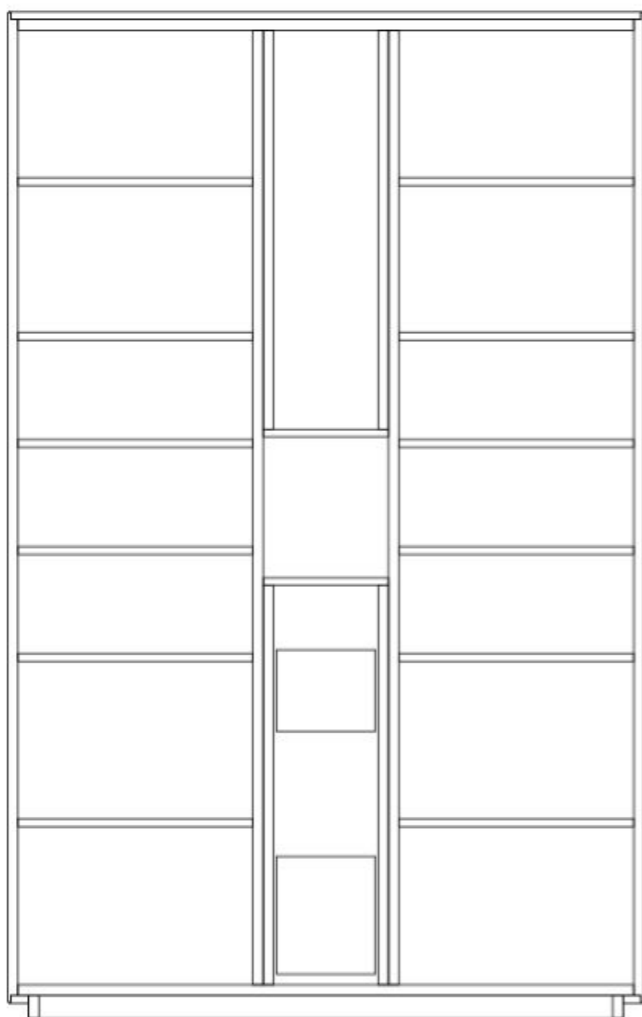
Tall storage unit in plain, dyed or lacquered wood with 4 hinged doors and a drawer, a small decorative niche and curved sides. Equipped with internal shelves and customized trays.

Inspired by the iconic Collectionist unit in fossil wood, this new container re-proposes and revises its design, enhancing the unique skills of our master craftsmen.

Available with or without Sesel decorative handles in cast bronze.



DIMENSIONS



Plain Woods



Maple



Oak



Teak



Zebrano



Walnut Canaletto



Dyed Walnut Canaletto



Mahogany



Ebony



“Termocotto” Oak



Rosewood



Wenge

Dyed Woods



Titanium AL1105



Grey AL1106



Sand AL1851



Black AL1853



Aniline Dyed



Available in all RAL Colors

Special Woods



Ziricote



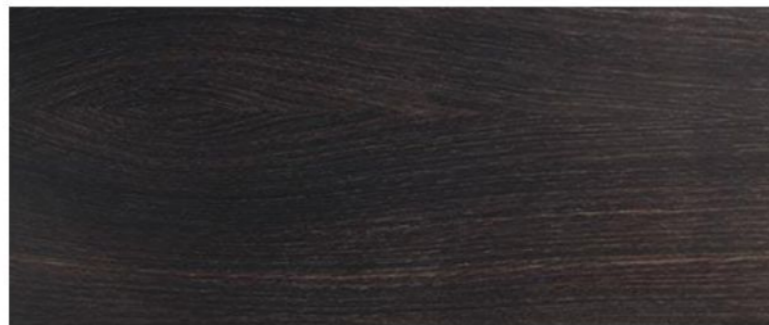
"Faggio Antico"



Rosewood "India"



Stone Oak "Carbone"



Stone Oak "Tabacco"



Walnut "Colore"

Gommalacca



Shellac stained ash

RAL Lacquering



Brushed Matt Lacquered



Glossy Lacquered



Available in all RAL Colors



www.materiacollection.com | info@materiacollection.com

MATERIA COLLECTION
LUXURY DECOR AND BESPOKE SOLUTIONS

📍 [1060 Kane Concourse, Bay Harbor Islands, FL 33154](#)
📍 [267 5th Ave., #504, New York, NY 10016](#)

📞 786-438-1330
📞 800-849-4953