

Maxima cabinet system - Maxima collection

design Bartoli Design



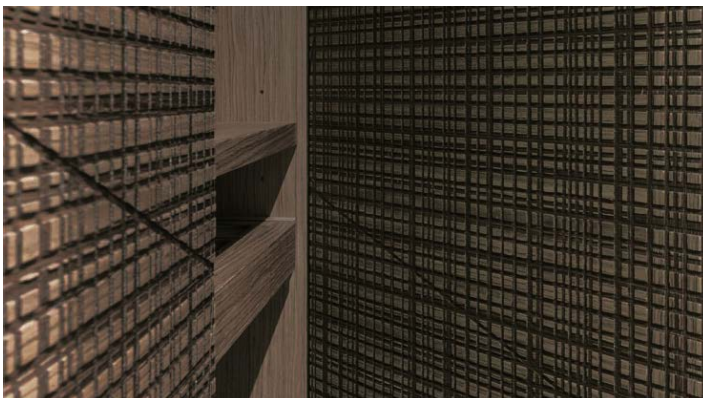
Wooden cabinet system with Maxima carving available in modules of different sizes, in all the wood finishes of the collection and in aniline-stained oak in all RAL colours.

Sistema di armadi in legno con scolpitura Maxima disponibile in moduli di diverse dimensioni, in tutte le finiture di legno della collezione e in rovere tinto anilina in tutti i colori RAL.



Maxima cabinet system - Maxima collection

design Bartoli Design



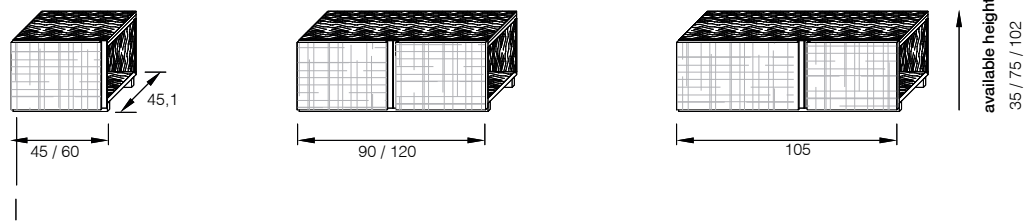
The Maxima day wardrobe systems are available in different finishes, such as the "Liquid Metal" finish, with various accessory options and integrated doors and wall panels, to create infinite compositions and allow complete customization.

I sistemi di contenimento giorno Maxima sono disponibili in diverse finiture, come ad esempio la finitura "Metallo Liquido", con svariate possibilità di accessorio e sistemi di porte e boiserie integrate, per creare infinite composizioni e permettere una completa personalizzazione.

_dimensions

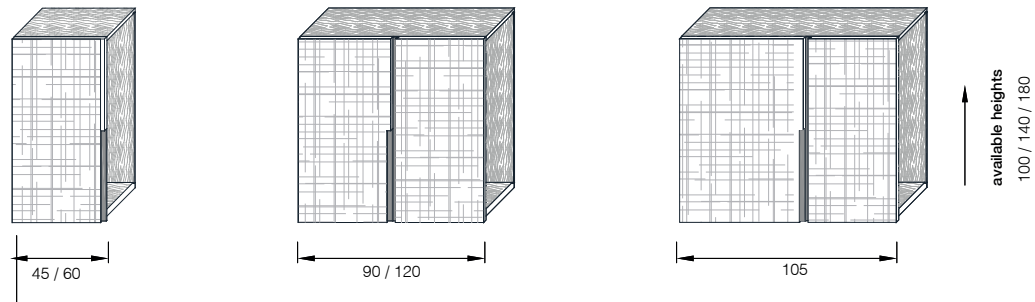
bases

basamenti – piétements – Unterstruktur – Нижний шкаф



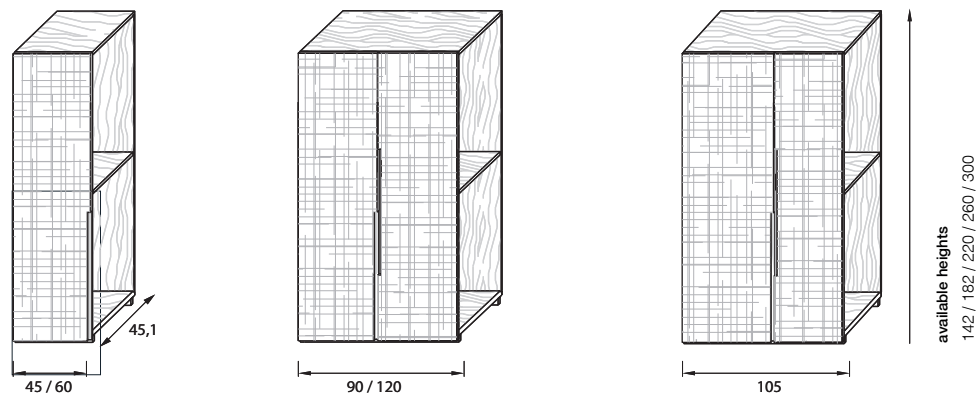
hanging unit

pensile – élément mural – hängeschränk- Навесной шкаф



columns

colonne – colonnes – Säulen - колонны



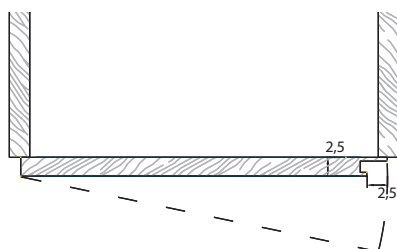
-Dimensions in centimeters and inches.

The right to discontinue and make changes is reserved.

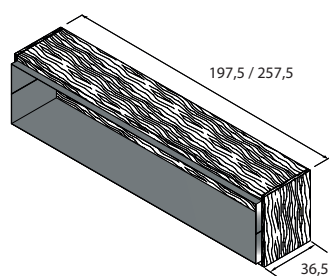
This information is based on the latest product information available at the time of printing.

_dimensions

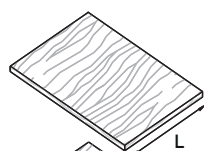
handles detail



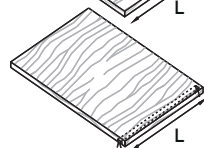
niche



components



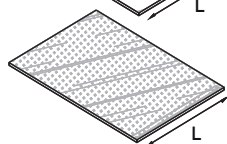
adjustable shelf
L. 42,5 / 57,5 / 87,5 / 102,5 / 117,5



fixed shelf with led
L. 42,5 / 57,5 / 87,5 / 102,5 / 117,5

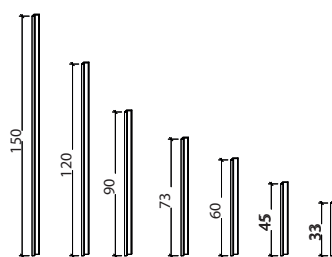


adjustable crystal shelf
L. 42,5 / 57,5 / 87,5 / 102,5 / 117,5

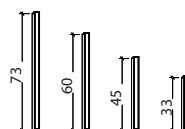


adjustable crystal fumé shelf
L. 42,5 / 57,5 / 87,5 / 102,5 / 117,5

columns handles

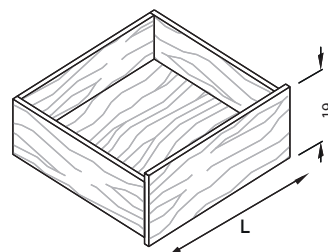
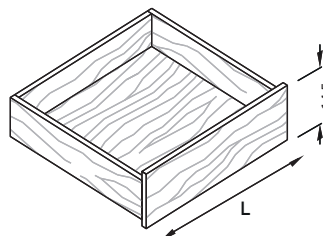
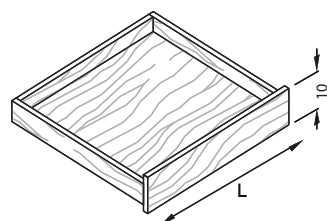


bases handles



drawers

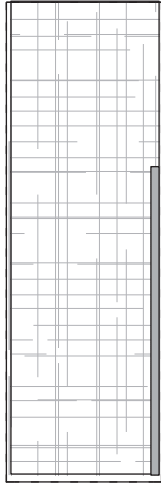
L. 34 / 49 / 79 / 94 / 109



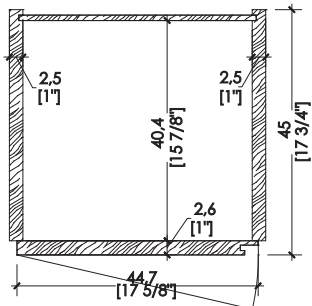
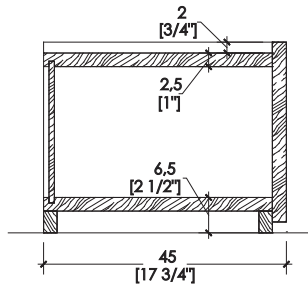
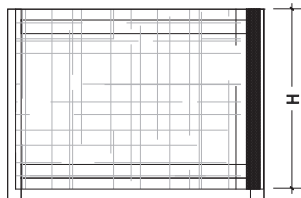
-Dimensions in centimeters and inches.
The right to discontinue and make changes is reserved.
This information is based on the latest product information available at the time of printing.

_dimensions

maxima carved wood



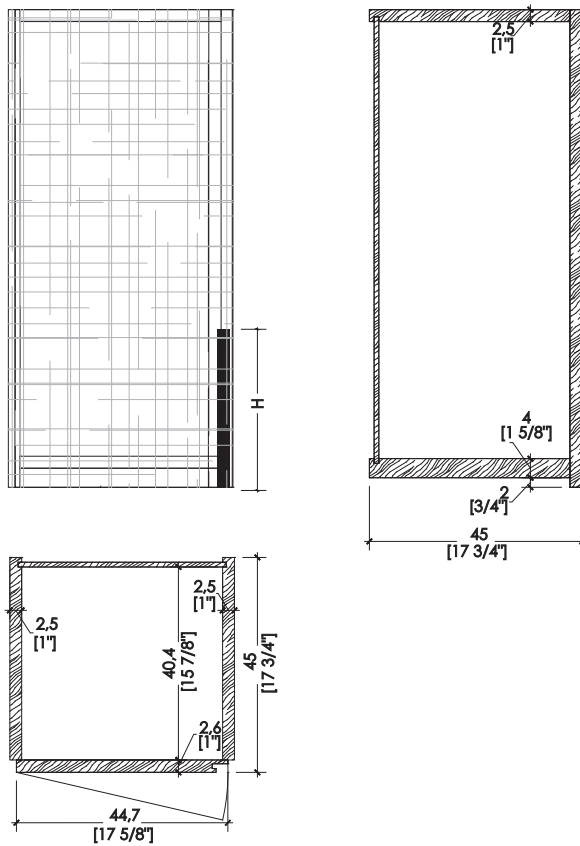
element for base unit



-Dimensions in centimeters and inches.
The right to discontinue and make changes is reserved.
This information is based on the latest product information available at the time of printing.

_dimensions

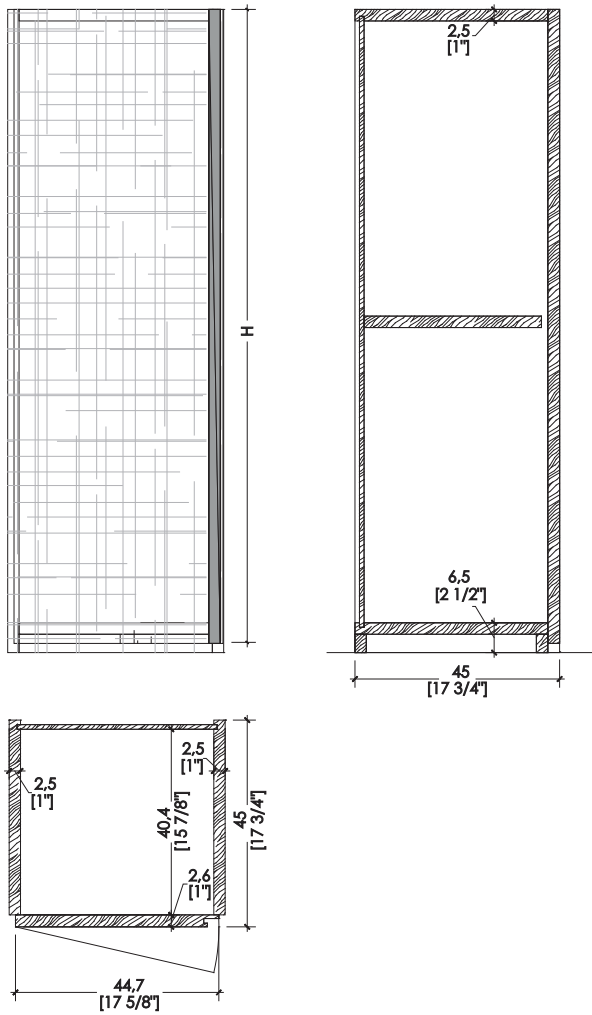
element for hanging unit



-Dimensions in centimeters and inches.
The right to discontinue and make changes is reserved.
This information is based on the latest product information available at the time of printing.

_dimensions

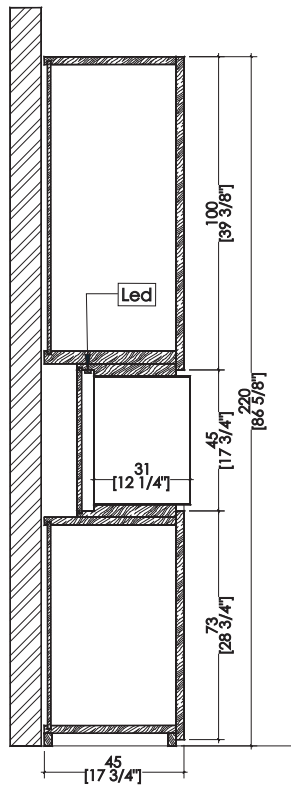
element for high storage unit



-Dimensions in centimeters and inches.
The right to discontinue and make changes is reserved.
This information is based on the latest product information available at the time of printing.

_dimensions

niche vertical section



-Dimensions in centimeters and inches.
The right to discontinue and make changes is reserved.
This information is based on the latest product information available at the time of printing.

_materials & finishes

Maxima carving



Maple



Oak



Teak



Canaletto Walnut



Rosewood



Wenge



Aniline dyed



Available in all
RAL / NCS colors

_The finishes shown are indicative and refer to the entire production range.
Laurameroni reserves the right to modify the range without warning.

_maintenance

_WOOD

Wood is a high-quality natural product. To maintain the natural character of wood and to protect surfaces from mechanical and chemical wear, veneered surfaces are coated with a high quality transparent paint. For cleaning and care, do not use acids or alkali-based cleaners, agents with bleaching additive, scouring powder, steel wool, pot scourers or similar. Anything hot or damp will cause damage to the surface. Remove soiling and liquids immediately. Use a dry soft cloth for cleaning, eventually add a little neutral cleaning agent to the water. The cloth must be only slightly damp, to prevent discolouration or swelling of the surface. It is then essential to rub the surfaces dry, so that there is no residual moisture.

Il legno è un prodotto naturale di alta qualità. Per mantenere il carattere naturale del legno e proteggere le superfici dall'usura meccanica e chimica, le superfici impiallacciate sono rivestite con una vernice trasparente di alta qualità. Per la pulizia e la cura, non usare detergenti acidi o alcalini, agenti con additivi sbiancanti, polveri abrasive, lana d'acciaio, spugne o simili. Qualsiasi cosa calda o umida causerà danni alla superficie. Rimuovere immediatamente sporco e liquidi. Utilizzare un panno morbido e asciutto per la pulizia, eventualmente aggiungere un po' di detergente neutro nell'acqua. Il panno deve essere solo leggermente umido, per evitare scolorimenti o rigonfiamenti della superficie. È quindi essenziale strofinare gentilmente le superfici asciutte, in modo che non ci sia umidità residua.

BEDIF
FEREN
TBEUN
IQUE.

LAURAMERONI s.r.l.
22040 Alzate Brianza (Como)
Via Manzoni, 2784
T +39 031 761450
info@laurameroni.com
www.laurameroni.com