



MATERIA COLLECTION

LUXURY DECOR & BESPOKE SOLUTIONS

CORTECCIA SIDEBOARD

LAURAMERONI
design ■ collection



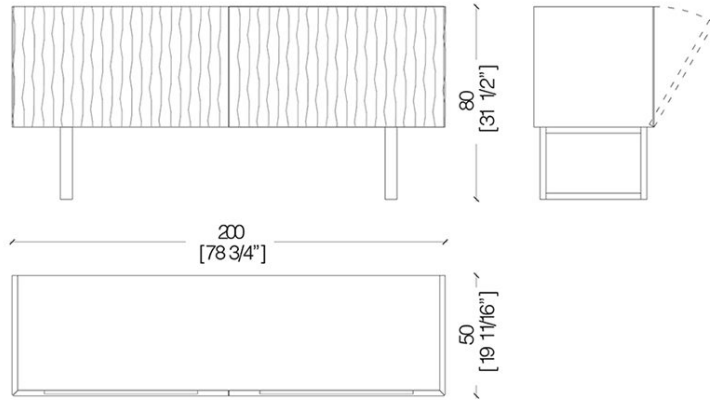
Sideboard in Liquid Metal, doors and sides with Corteccia texture and Calacatta Oro marble top. The internal structure in heat-treated oak is divided into two parts equipped with two internal drawers or two shelves.

This sideboard can be produced in all Liquid Metal finishes and with a marble or Liquid Metal top. It is also available in special dimensions, with hinged or flap doors and in the hanging version.

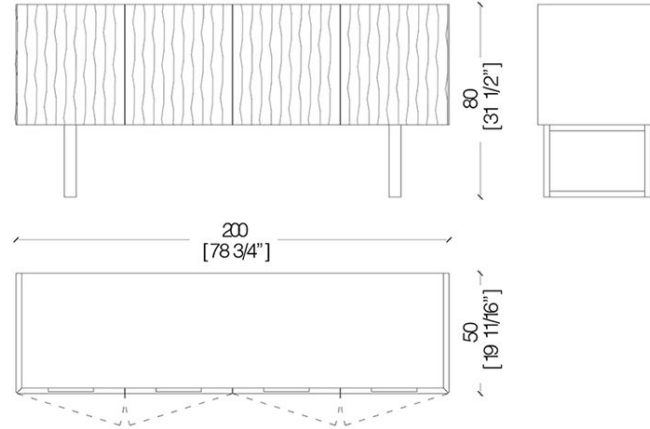
A masterpiece of artistic craftsmanship, an extremely creative and innovative process that includes, respecting our values, a strong manual component to enhance the product's uniqueness.



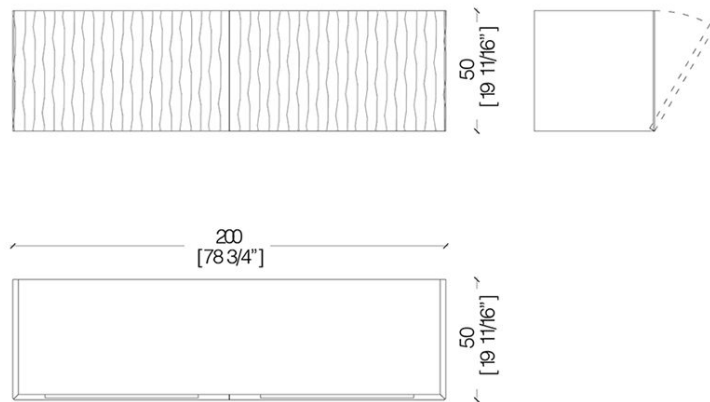
DC 41 Dresser



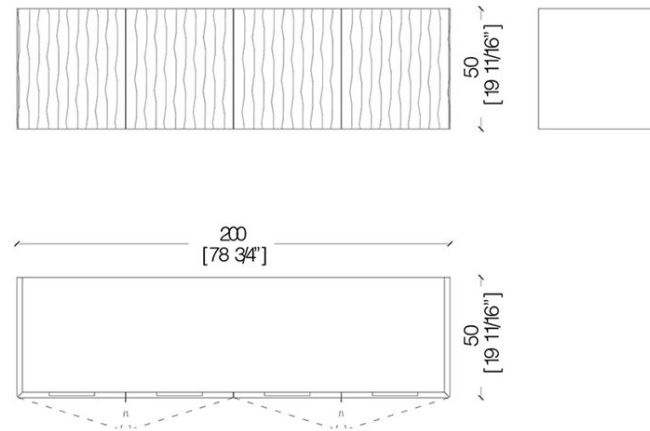
DC 43 Dresser



DC 42 Dresser



DC 44 Dresser



CORTECCIA FINISH



Corteccia Bronze



Corteccia Tin

LIQUID METAL CORTECCIA TOP



Liquid Metal bronze

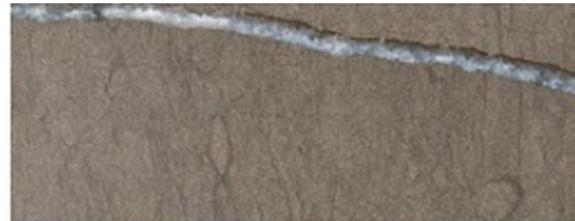


Liquid Metal tin

MARBLE TOP



Gris Vignè



Pietra di Fossena

MATERIA

COLLECTION
LUXURY DECOR AND BESPOKE SOLUTIONS

1060 Kane Concourse, Bay Harbor Islands, FL 33154

1-800-849-4953 | 786-438-1330

www.materiacollection.com | info@materiacollection.com

LAURAMERONI
design . collection

U.S.A HEADQUARTERS