



MATERIA COLLECTION

LUXURY DECOR & BESPOKE SOLUTIONS

MARGARET ARMCHAIR

LAURAMERONI
design . collection



Armchair with natural or lacquered wood structure and upholstered seat covered in leather, fabric or velvet. With its small and refined proportions it grants an extremely comfortable seat and ease of use thanks to its integrated handle.

This product is integrated into the Margaret collection of chairs, stools and benches. The sinuous line, the well-proportioned legs, a comfortable seat, the unusual detail of the wooden handle integrated into the backrest and the versatility of the collection, offer ideas for suggestive and functional use in both residential or public spaces.





The distinctive element of the handle integrated into the curve of the back side creates a connection to the finish of the structure, intensifying the sinuous line of the armchair and giving a pleasant aesthetic look.

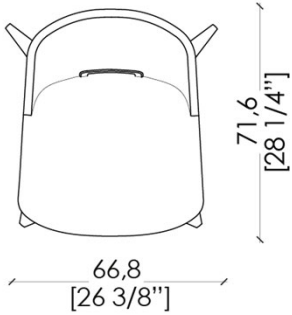
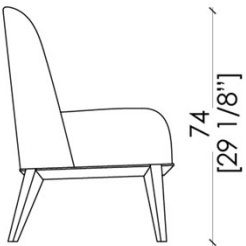
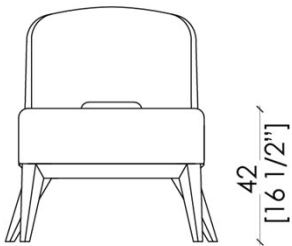
The contained dimensions and the perfect harmony of the proportions allow to place the armchair even in more intimate and private spaces: a quiet room to read a book, to listen to good music, to enjoy a moment of relaxation.

The visual impact of the different chromatic effects obtained by combining fabrics, leather or velvets allows the creation of a highly personalized conversation area, which reflects the creative flair of those who conceived it.

The ottoman maintains the innate sinuous and elegant line of the entire collection, pairing with the armchair which distinguishes in discretion and lightness.



DIMENSIONS



WOODEN STRUCTURE



Aniline Dyed



Maple



Oak



Cherrywood



Teak



Walnut



Caneletto Walnut



Dyed Walnut Caneletto



Rosewood



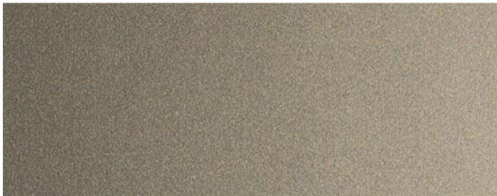
"Termocotto" Oak



Wenge



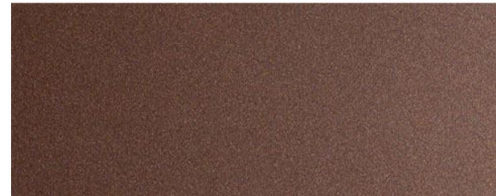
Ebony



Lacca Sabbia



Lacca Bronzo



Lacca Malva

VELVETS



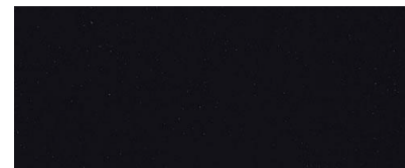
407



417



403



406



412



438



418



415



405



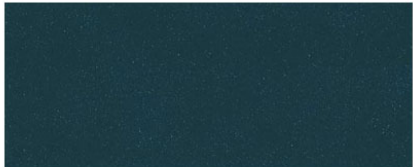
401



431



487



429



409



404



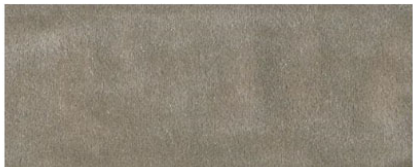
414



413



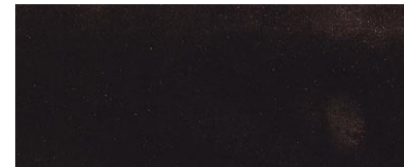
424



437



457



477

SKIN LEATHERS



Skin Ebony



Skin Garnet



Skin Marble



Skin Mud



Skin Night



Skin Rust

SWING LEATHERS



Swing 4507



Swing 4501



Swing 4502



Swing 4503

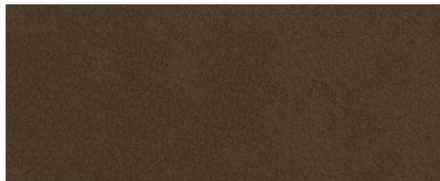


Swing 4504

NUBUCK LEATHERS



Nubuck 2118



Nubuck 2133



Nubuck 2132



Nubuck 2115



Nubuck 2105



Nubuck 2103



Nubuck 2102

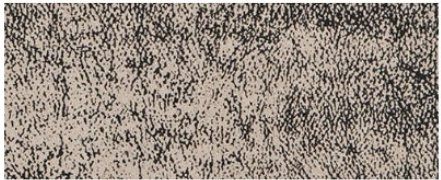


Nubuck 2101



Nubuck 2100

PIXEL LEATHERS



Pixel Antracite



Pixel Guacamole

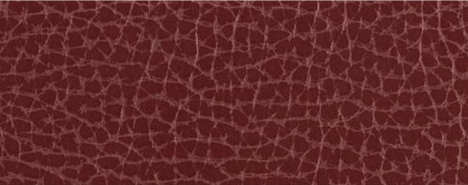


Pixel Vino

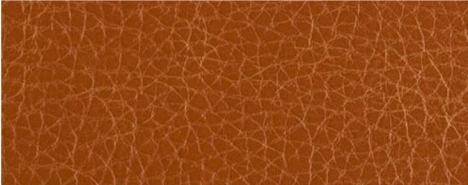


Pixel Nocciola

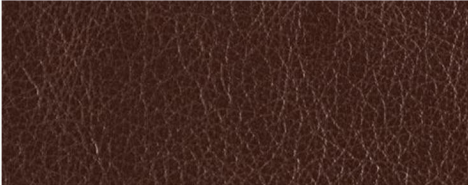
TOSCA LEATHERS



Tosca Bordeaux



Tosca Cognac



Tosca Marrone



Tosca Testa di Moro

MATERIA

COLLECTION
LUXURY DECOR AND BESPOKE SOLUTIONS

1060 Kane Concourse, Bay Harbor Islands, FL 33154

www.materiacollection.com | info@materiacollection.com

1-800-849-4953 | 786-438-1330

LAURAMERONI
design . collection

U.S.A HEADQUARTERS