



MATERIA

COLLECTION
LUXURY DECOR AND BESPOKE SOLUTIONS

Art Collection Dressers - Mandala

LAURAMERONI
design ■ collection

INSTARSIA COLLECTION

Thanks to the collaboration with well-known artists and designers, we created a collection of furniture deserving the status of art products.

The ancient inlay technique, the extreme ability of our craftsmen and the creative inspiration of our artists fuse together: the result is a collection characterized by a timeless beauty and inspired by the desire to create ambitious products.

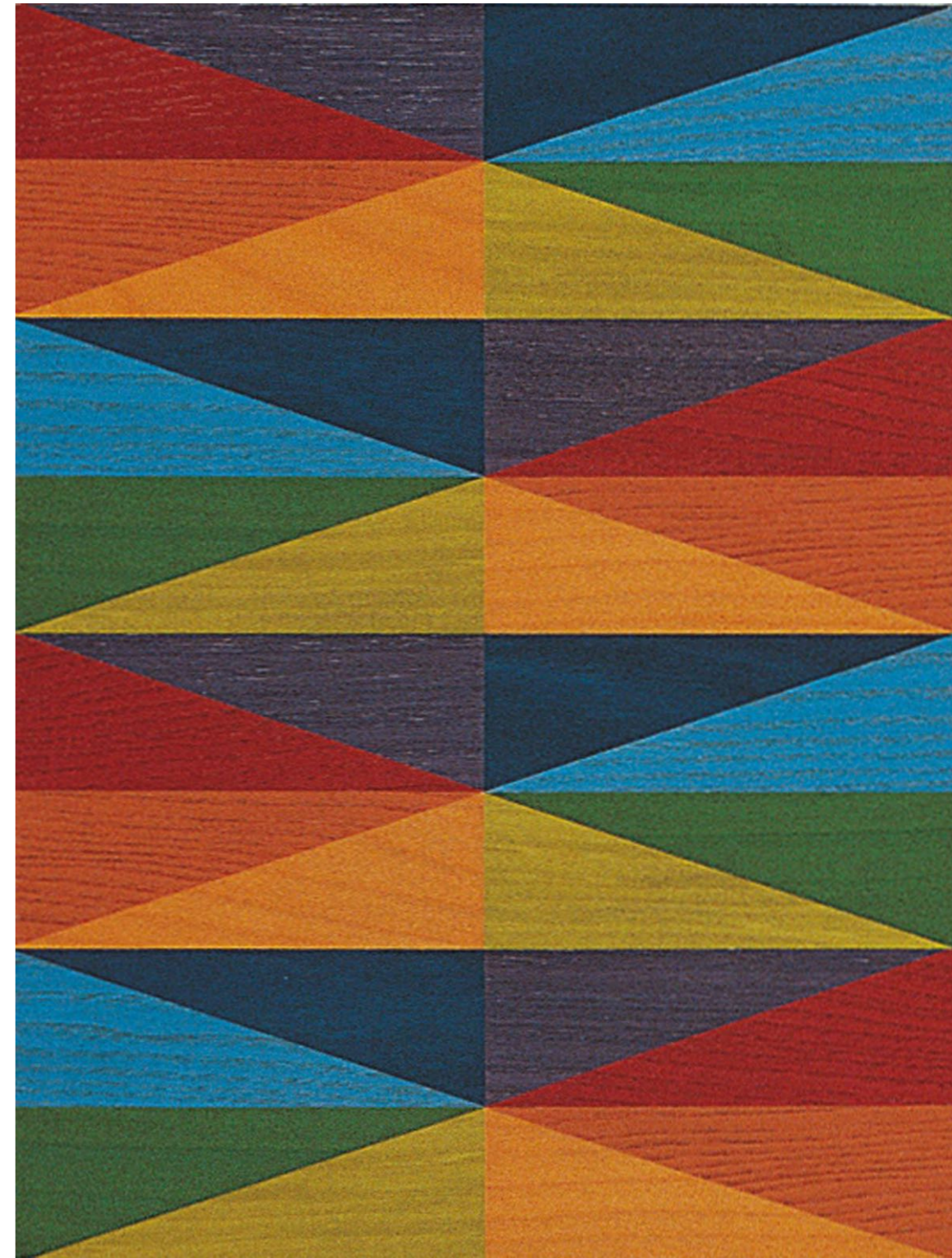
Intarsia Collection revives the local tradition of this ancient inlaying technique: a collection of sideboards designed to be reproduced only in numbered specimens, signed, and certified by the author and by the craftsman.

These sideboards are design furniture turned into paintings. "Intarsia" represents a direct contact with raw materials which take shape through manual ability and scrupulous dedication, reinvented by imagination and direct experience with wood.

MANDALA

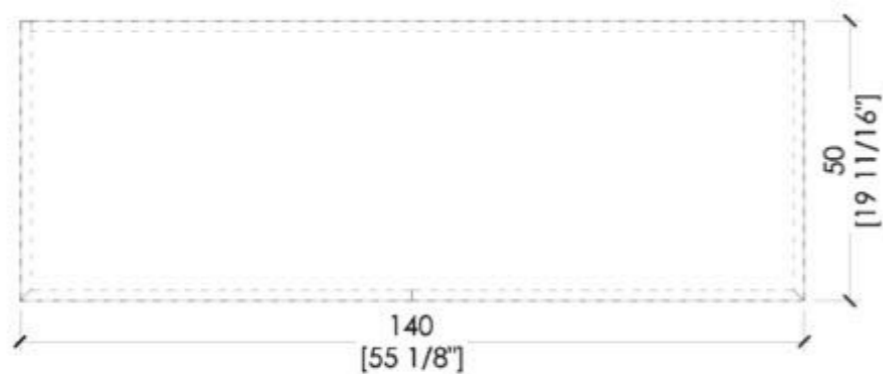
project by Jorrit Tornquist

INSTARSIA 2

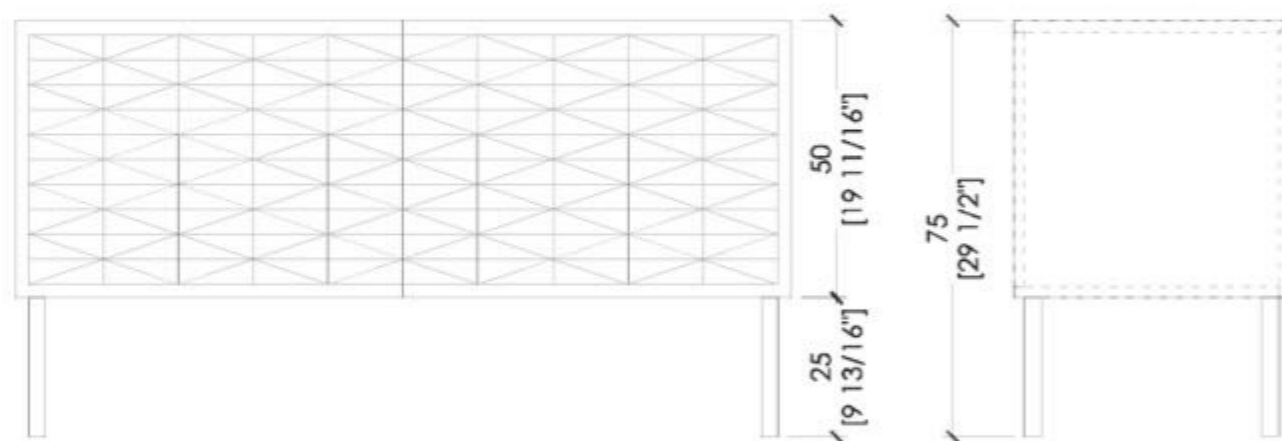


The author chooses a traditional geometric pattern to show that the quality of results is not determined by the form, but by the use of colors. It is a pictorial pattern he used in specific phases of his career. It goes back to the 1960s and develops an idea that took up a good deal of his time in that period. In each rectangle the colorless light is decomposed into the eight colors of the chromatic circle, so that light becomes visible through the use of colors. Each rectangle is made up of opposing complementary couples, to achieve the maximum chromatic brightness.

DIMENSIONS

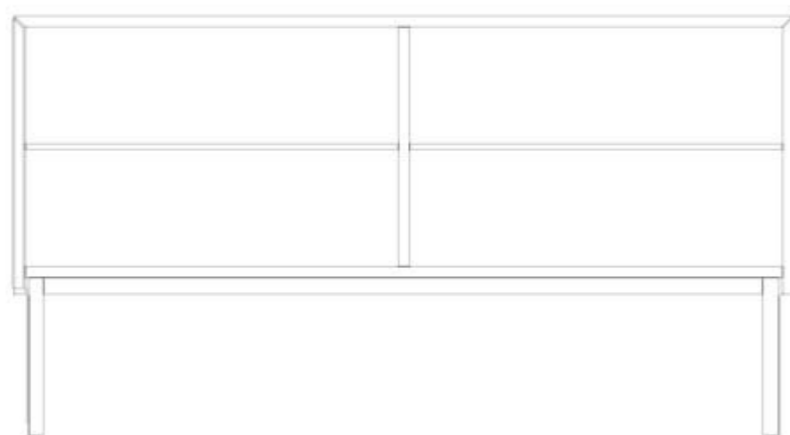


Plan view



Front view

Side View



Section



Sideboards "Instarsia 1 & 2"

Reproduced only in
33 numbered specimen

Door with inlays and structure wood
veneered in natural maple.

Door with push pull opening system.

Fitted with 1 internal shelf and
*available with brushed metal legs or as
a hanging sideboard.*

Special dimensions are NOT available.

Dimensions:

W55" 1/8 x D19" 11/16 x H29" 1/2



Jorrit Tornquist was born in 1938 in Graz, Austria. Since 1992, he has also become an Italian citizen. He is above all a painter. He teaches light-color at Milan Polytechnic, Faculty of Industrial Design, at the Faculty of Architecture in Graz and in the Carrara Academy in Bergamo. He has been studying colors and perception for forty years.

He started from a very scientific and ecological approach, based on accurate experiments on color, density and clarity and on the analysis of the complementary effects, according to the Concrete Art tradition. Subsequently, the artist became aware of the insufficiency of an art, which was limited to geometric and programmed projects. Therefore, Tornquist elaborated his own "Theory of Color", based on his technical knowledge, together with personal sensibility and studies about colors effects on mood. The merger of scientific and psychological elements in the work, his attempt to conciliate the color structural-chromatic value with the sensitive-affective value, in fact, are the artist's actual innovations.

MATERIA

COLLECTION
LUXURY DECOR AND BESPOKE SOLUTIONS

1060 Kane Concourse, Bay Harbor Islands, FL 33154

www.materiacollection.com | info@materiacollection.com

1-800-849-4953 | 786-438-1330

LAURAMERONI
design . collection

U.S.A HEADQUARTERS