



# MATERIA --- COLLECTION

LUXURY DECOR & BESPOKE SOLUTIONS

MARGARET CHAIR

---

LAURAMERONI  
design . collection



Chair with wooden structure and backrest and seat upholstered in leather, fabric, or velvet.

The Margaret chair is characterized by sinuous lines that connect gently the back to the seat. The long, narrow legs intersect with the angular structure, creating harmonious details. The main and distinctive element of the chair is the handle, integrated in the backrest's curves.

The main and distinctive element of the chair is the elegant wooden handle, perfectly integrated in the backrest's curves.





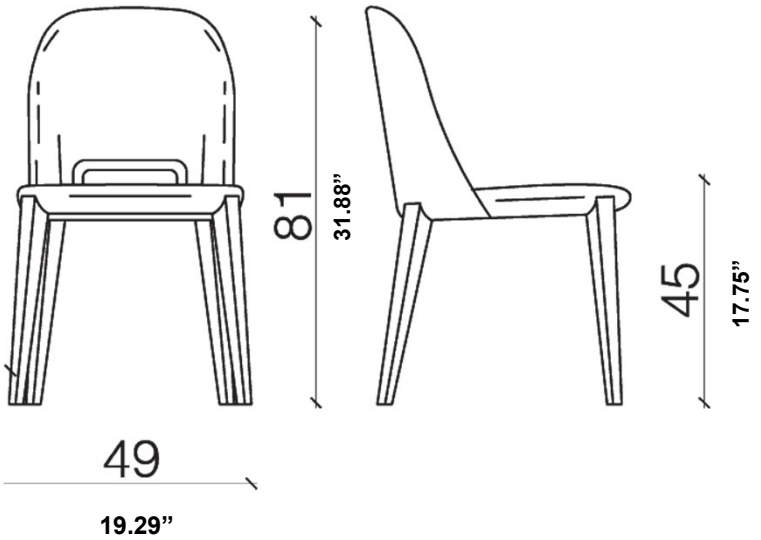
The elegant combination between wood and fabric, leather or velvet allows to create customized solutions to answer to different needs and to adapt to different environments, remaining true to Laurameroni usual attention to details.

Margaret offers guests or customers a comfortable yet extremely elegant seat for relaxing and pleasant moments.

Different combinations of leathers create different effects, but the elegance of this chair remains unchanged.

Margaret chair, thanks to a sophisticated design, adapts both to residential environments and to public places, such as executive offices or hotels.

**DIMENSIONS**



WOODEN STRUCTURE



Aniline Dyed



Maple



Oak



Cherrywood



Teak



Walnut



Caneletto Walnut



Dyed Walnut Caneletto



Rosewood



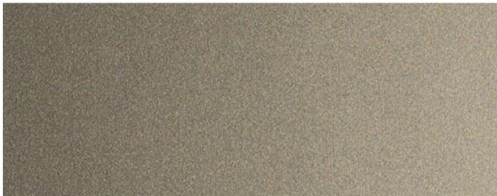
"Termocotto" Oak



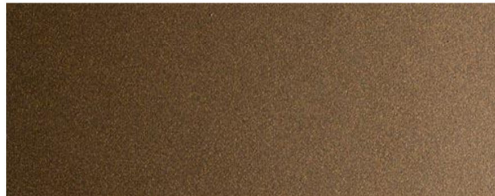
Wenge



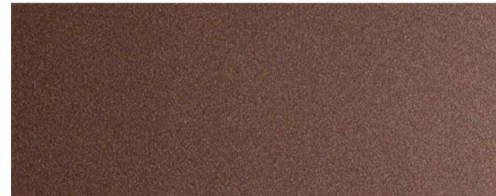
Ebony



Lacca Sabbia



Lacca Bronzo



Lacca Malva

VELVETS



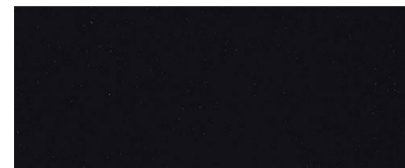
407



417



403



406



412



438



418



415



405



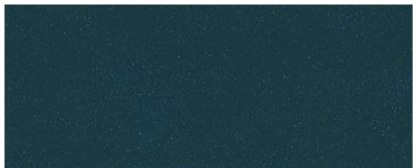
401



431



487



429



409



404



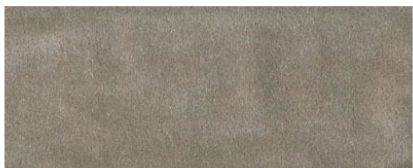
414



413



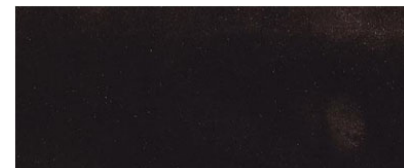
424



437



457



477

SKIN LEATHERS



Skin Ebony



Skin Garnet



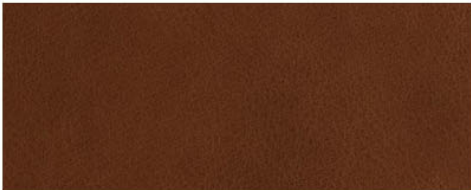
Skin Marble



Skin Mud

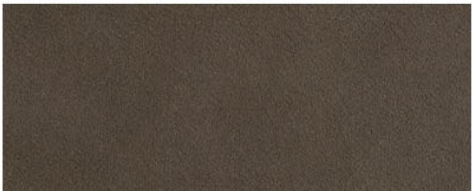


Skin Night

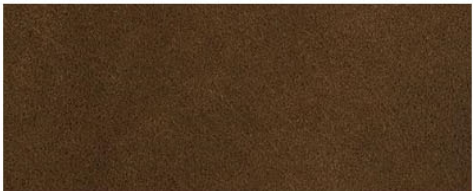


Skin Rust

SWING LEATHERS



Swing 4507



Swing 4501



Swing 4502



Swing 4503



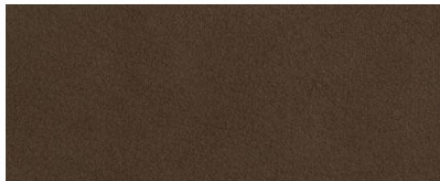
Swing 4504



NUBUCK LEATHERS



Nubuck 2118



Nubuck 2133



Nubuck 2132



Nubuck 2115



Nubuck 2105



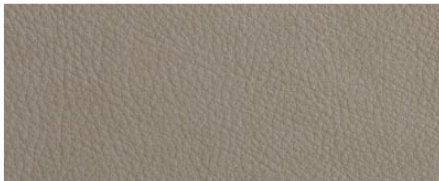
Nubuck 2103



Nubuck 2102



Nubuck 2101



Nubuck 2100

PIXEL LEATHERS



Pixel Antracite



Pixel Guacamole

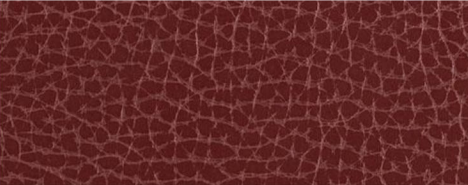


Pixel Vino

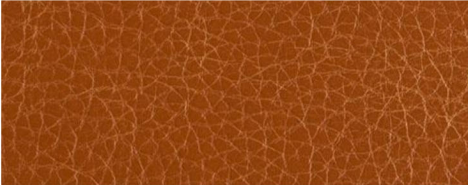


Pixel Nocciola

TOSCA LEATHERS



Tosca Bordeaux



Tosca Cognac



Tosca Marrone



Tosca Testa di Moro

# MATERIA

---

COLLECTION  
LUXURY DECOR AND BESPOKE SOLUTIONS

1060 Kane Concourse, Bay Harbor Islands, FL 33154

[www.materiacollection.com](http://www.materiacollection.com) | [info@materiacollection.com](mailto:info@materiacollection.com)

1-800-849-4953 | 786-438-1330

LAURAMERONI  
design . collection

U.S.A HEADQUARTERS