



MATERIA

COLLECTION
LUXURY DECOR AND BESPOKE SOLUTIONS

Line Collection Wall Panels

LAURAMERONI
design . collection

Line Wall Panels

Made to measure wood veneered panels with horizontal and vertical brass channels. Line wall panels are available in combination with integrated hinged or sliding doors, brass, wood veneered or crystal shelves, crystal showcases and integrated lighting systems. Thanks to its design, this panels system allows to cover very wide walls.

The Line Wall Panels are characterized by a design of vertical brass lines, that decorate the wood surface in a rhythmic sequence, which can be articulated into paneling. The Line Wall Panels are extremely elegant and thus perfect for all those environments in which luxury is conceived in an essential yet extremely refined way.



Line Wall Panels

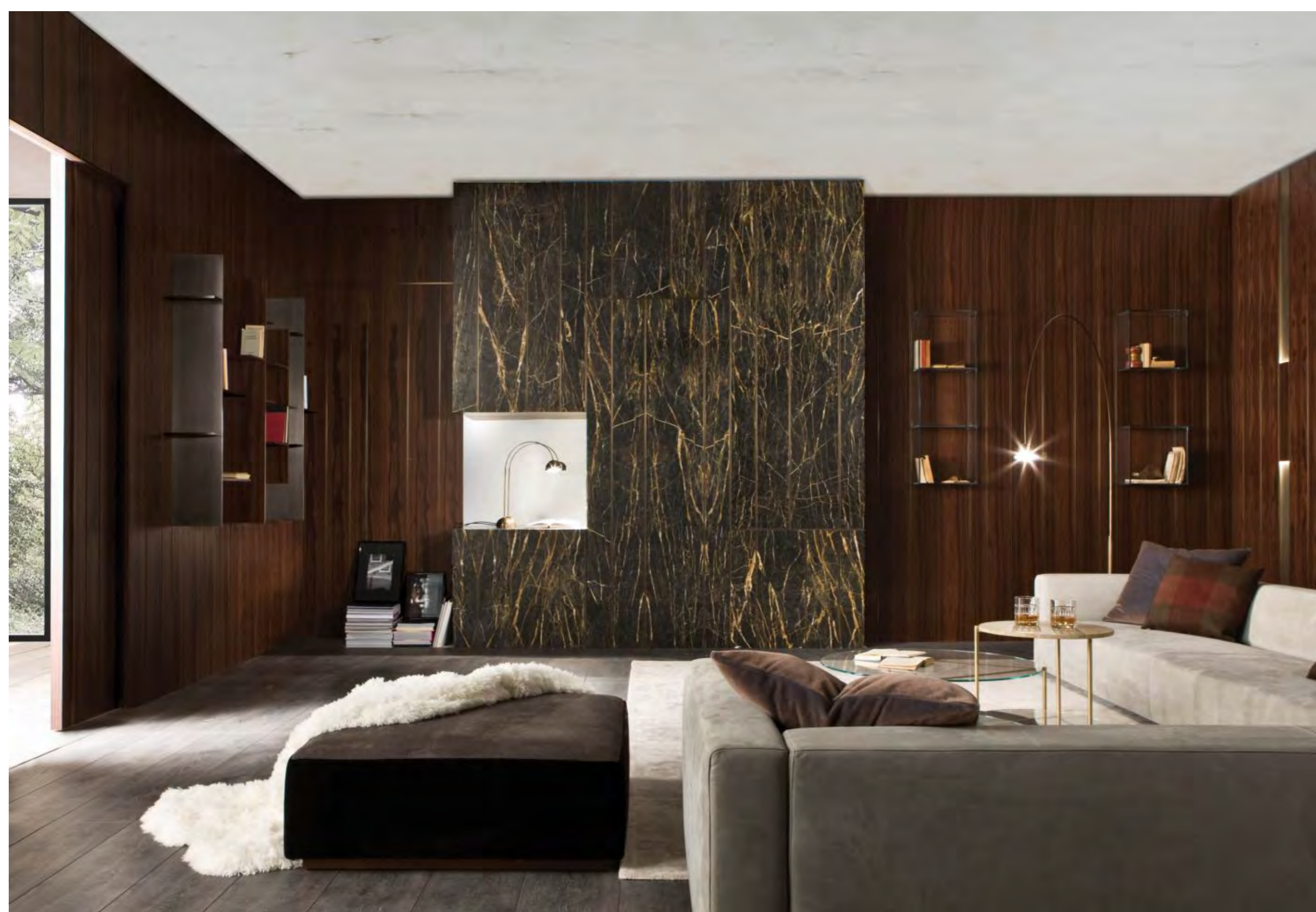


The panels can be wood veneered in all essences of the collection or aniline-dyed in different colors.

On request, Line panels can be realized with special finishes: precious wood essences combine with satin brass details to create a sophisticated product in which uniqueness prevails.

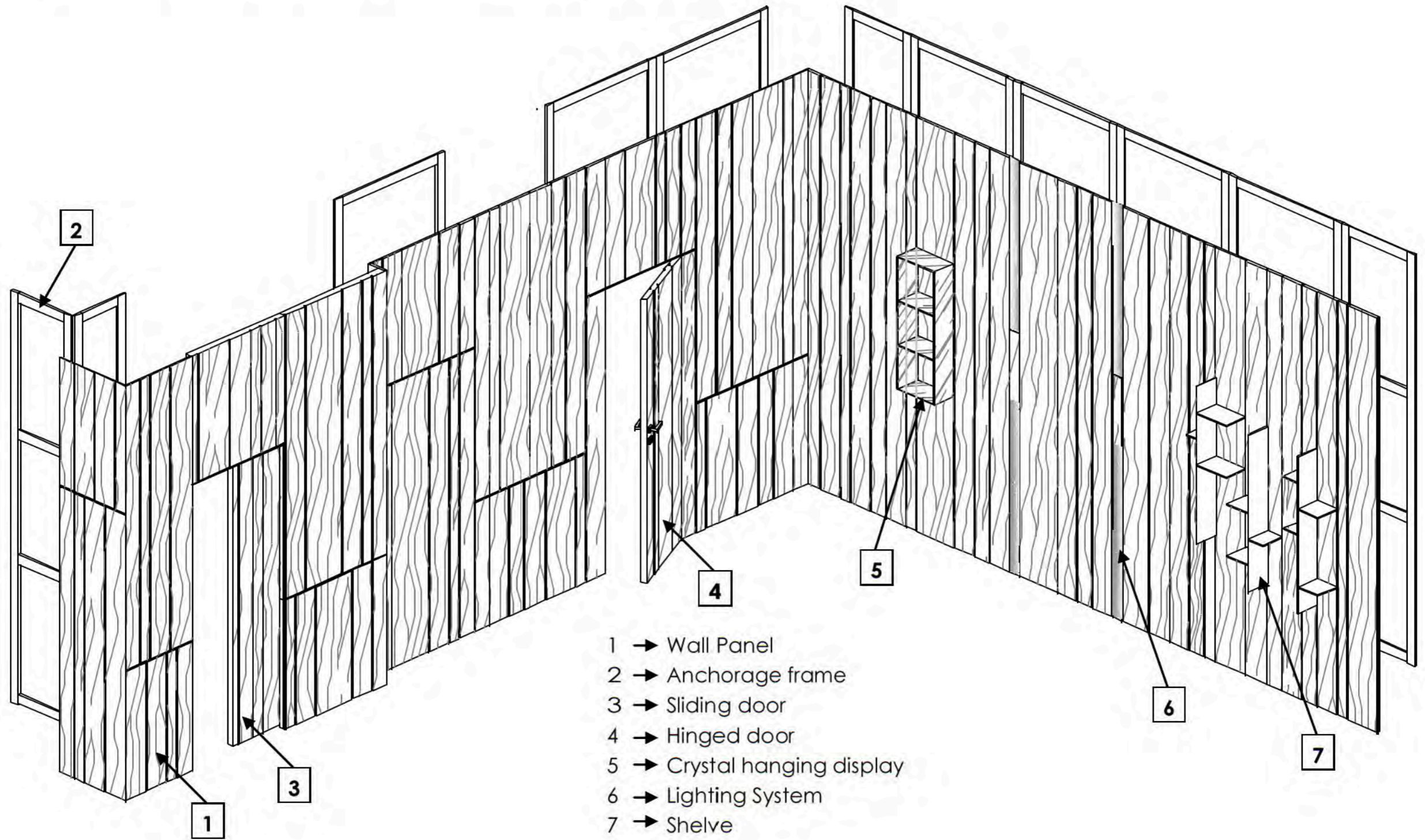
A brass shelves system integrated into the brass channels can be used to equip the wall panels.



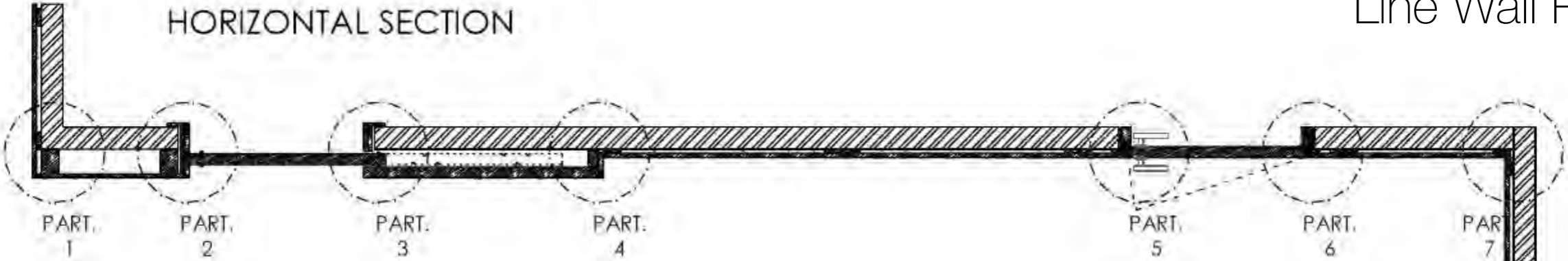


LINE WALL PANELS SYSTEM

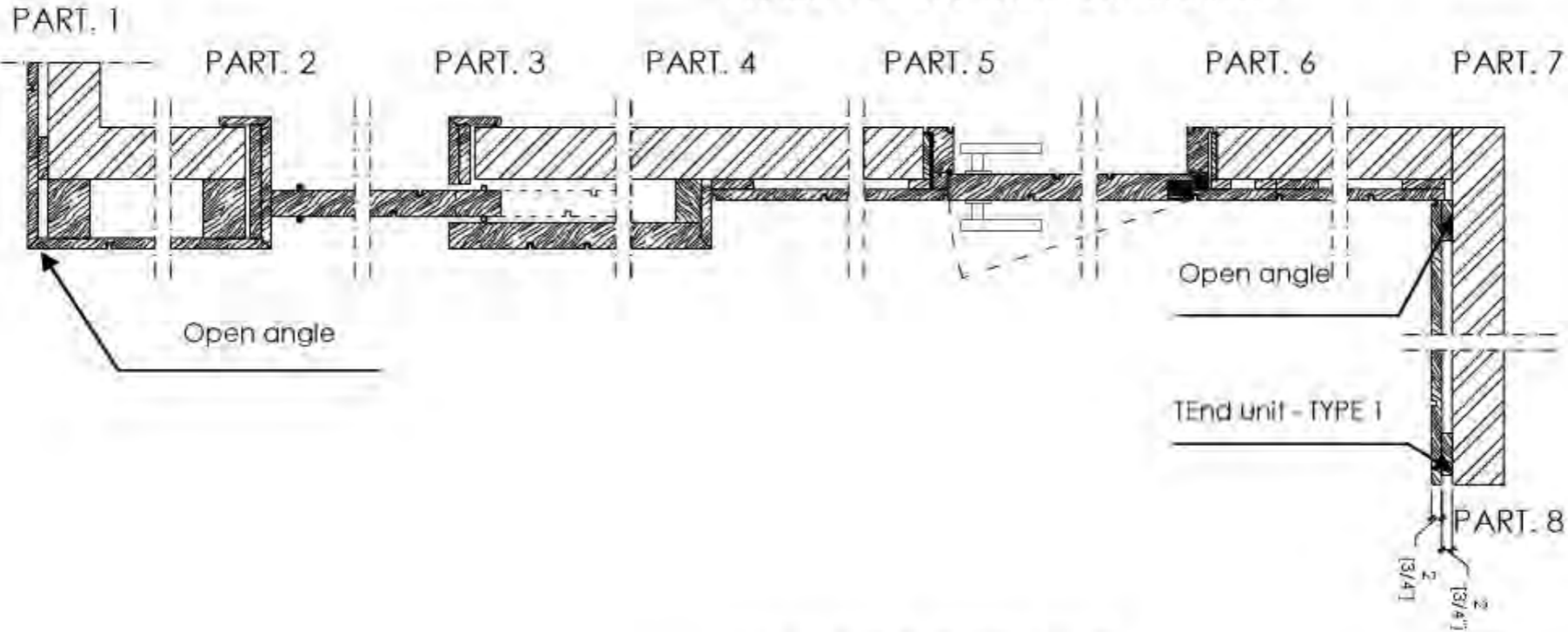
Line collection includes also wall panels, shelves, and units. The different combinations of Line wall panels create and decorate an exclusive environment, characterized by customized compositions. A simple structure for fixing the panels to the wall allows a quick and accurate assembly.



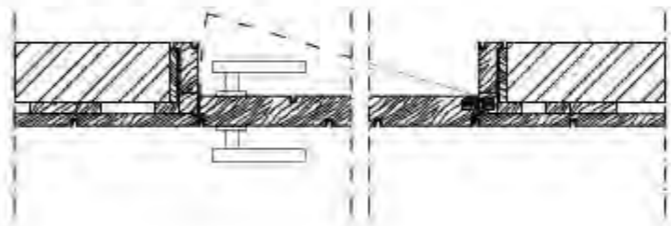
HORIZONTAL SECTION

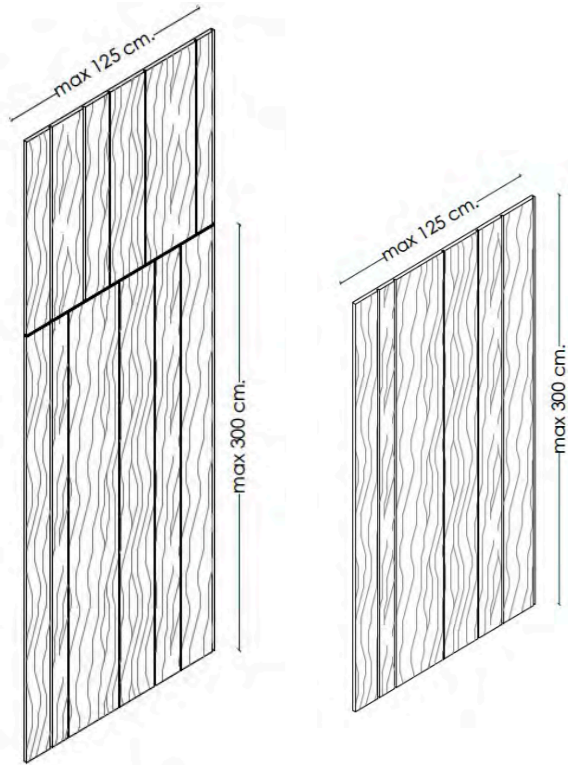


WALL PANEL SIDE OPENING



WALL SIDE OPENING

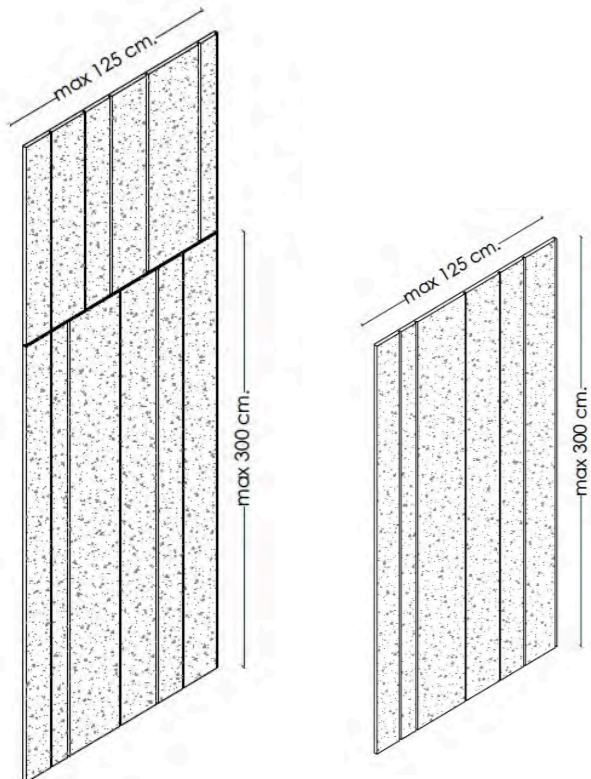




Panel veneered in plain wood with vertical grain on the sight side and with vertical inserts with satin or burnished brass finish. Thickness mm. 20

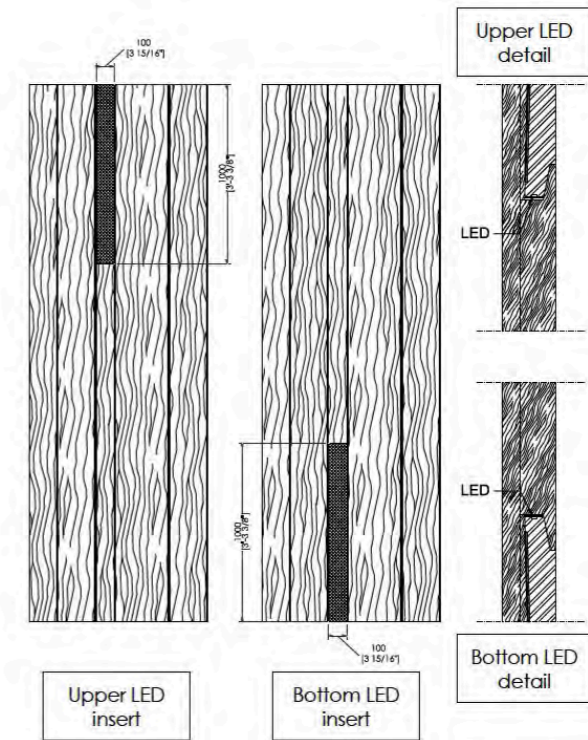
Available in all plain woods of the collection or in aniline-dyed oak in all RAL colours, without any price variation.

Strength

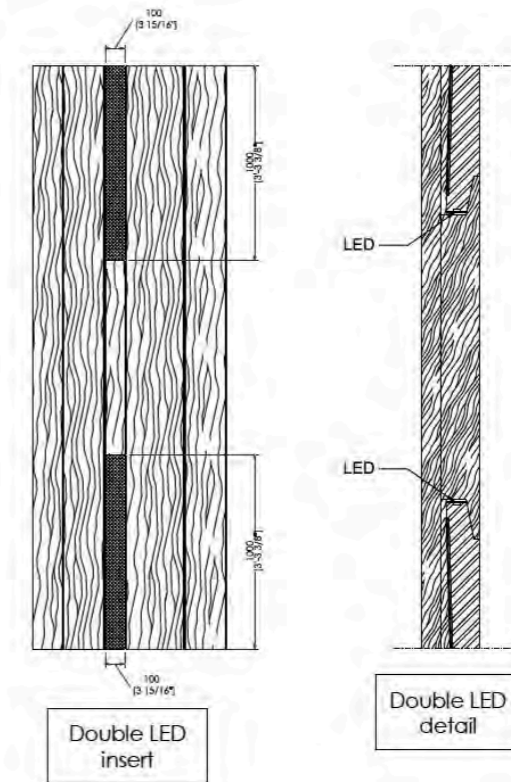


Panel brushed matt lacquered on the sight side with vertical inserts with satin or burnished brass finish. Thickness mm. 20

Available in all RAL colours without any price variation.

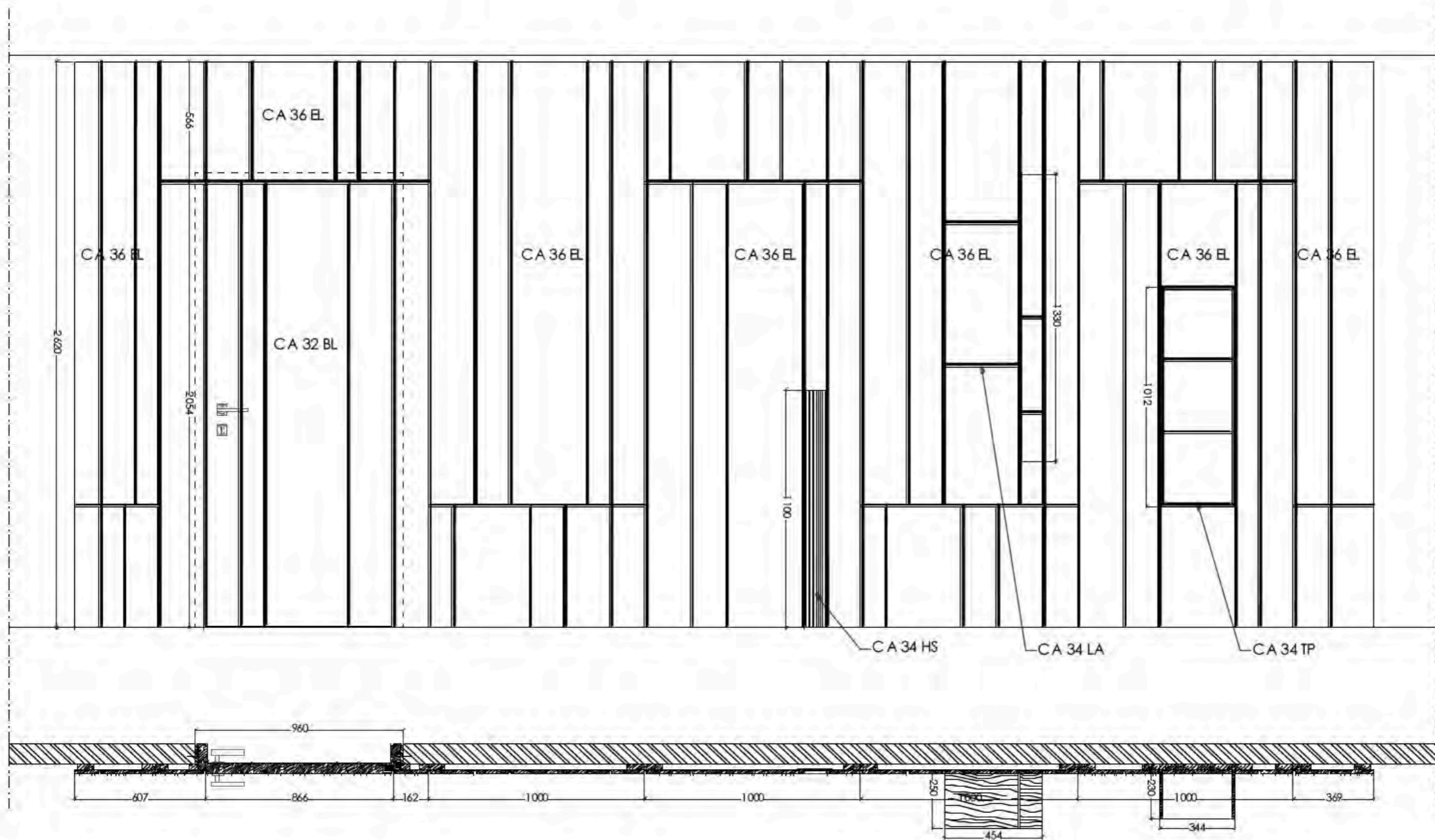


Single LED Light element for wall panels. The light can point downwards or upwards.



Double LED Light element for wall panels.

WALL PANEL SYSTEM example with HINGED doors

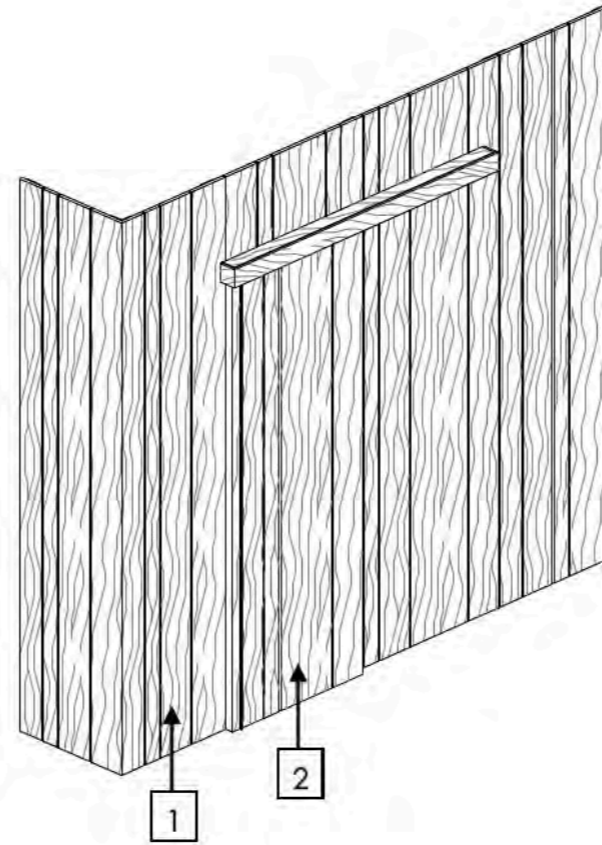
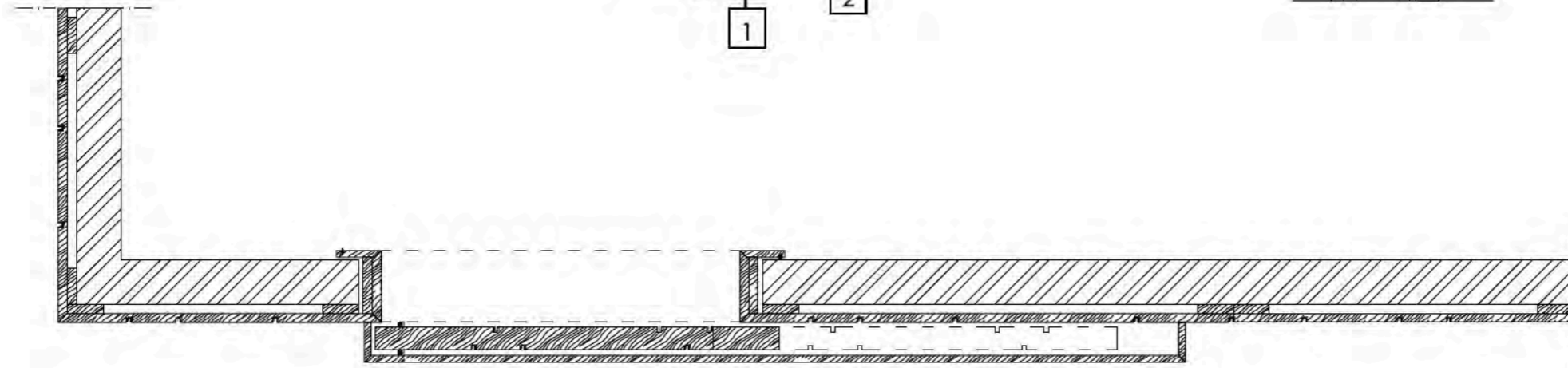


WALL PANEL SYSTEM with "AT SIGHT" Sliding Door

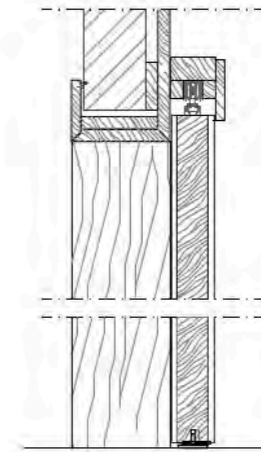
1 → Wall panel + Anchorage structure

2 → Sliding door
with rail cover

HORIZONTAL SECTION



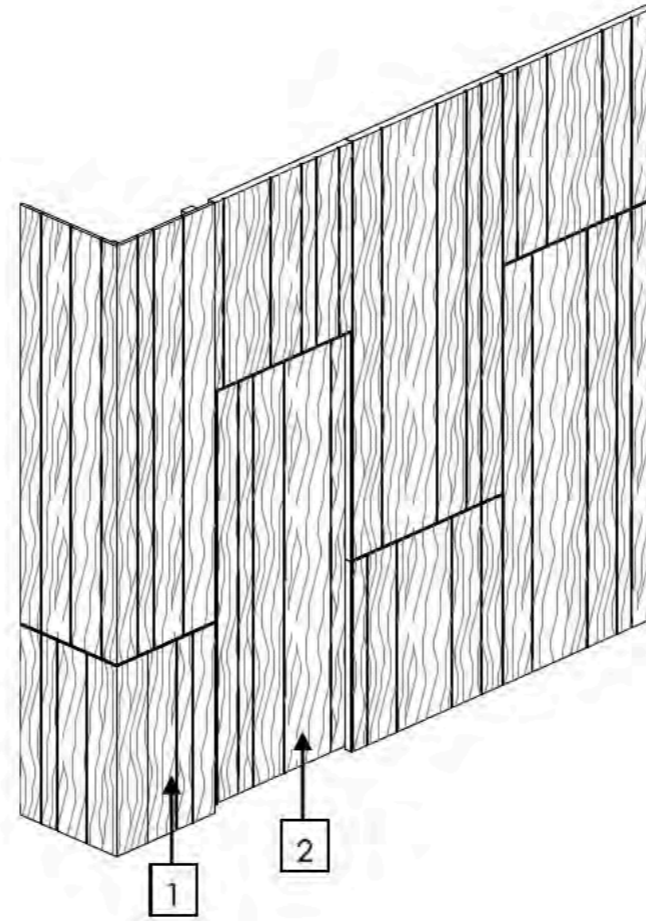
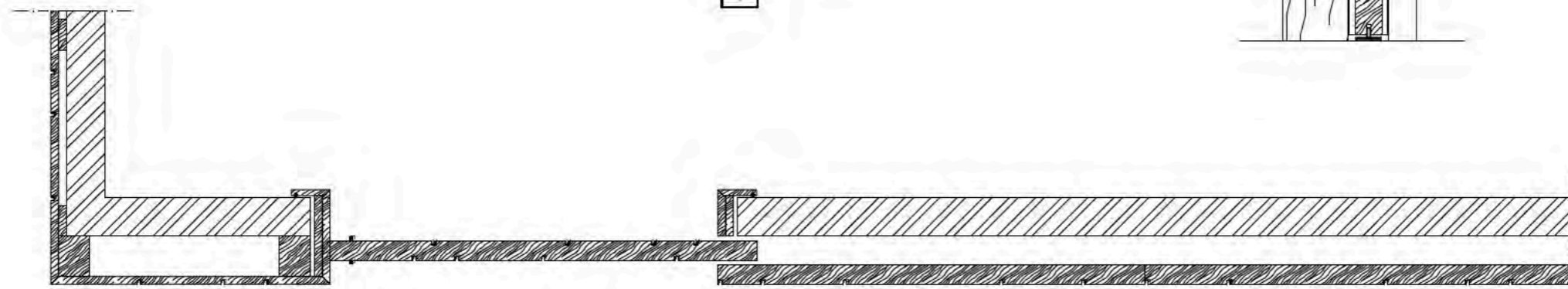
VERTICAL SECTION



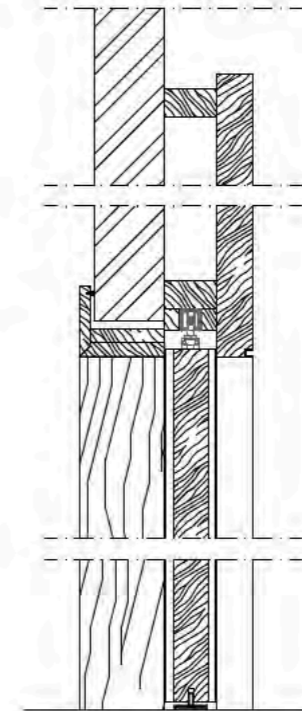
WALL PANEL SYSTEM with "POCKET Sliding Door

- 1 → Wall panel + Anchorage structure
- 2 → Sliding Door
With ceiling built-in rail

HORIZONTAL SECTION



VERTICAL SECTION



Custom-made hinged doors

Hollow-core hinged doors available in the following versions:

CA 32 BL → Metal and wood doorframe with door board in plain wood with metal inserts.

CA 32 BA → Metal and brushed matt lacquered doorframe with brushed matt lacquered door panel with metal inserts.

STANDARD hardware:

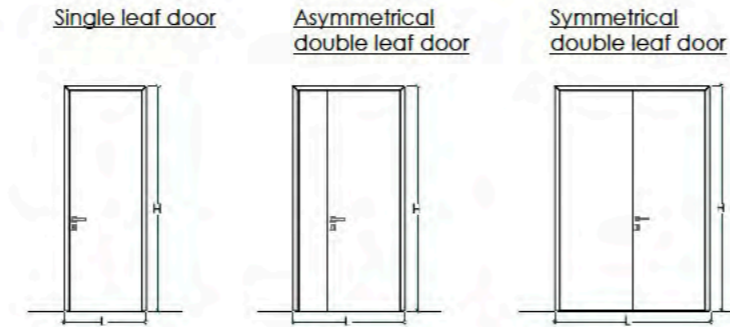
- Patent magnetic lock
- Concealed hinges in satin steel with 180° opening

Dimension limits:

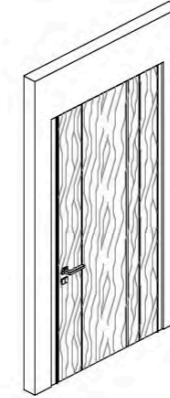
Single leaf door: W min. 70 - max. 100
H min. 210 - max. 300

Asymmetrical double leaf door: W min. 100 - max. 160
H min. 210 - max. 300

Symmetrical double leaf door: W min. 100 - max. 200
H min. 210 - max. 300



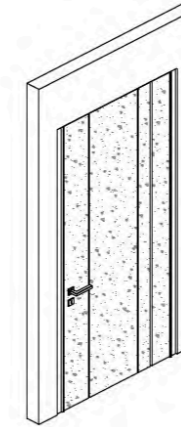
HINGED DOOR



Plain wood veneered hinged door

Hollow-core hinged door veneered in plain wood with vertical grain and inserts with satin or burnished brass finish. Patent magnetic lock.

Plain wood veneered doorframe and metal inserts with satin or burnished brass finish.

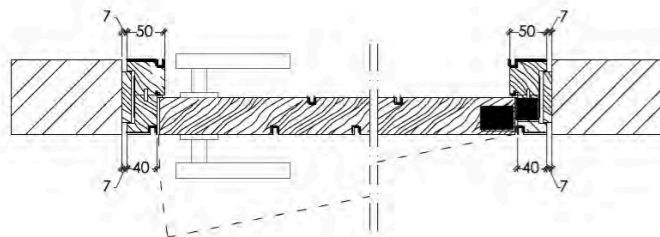


Brushed matt lacquered hinged door

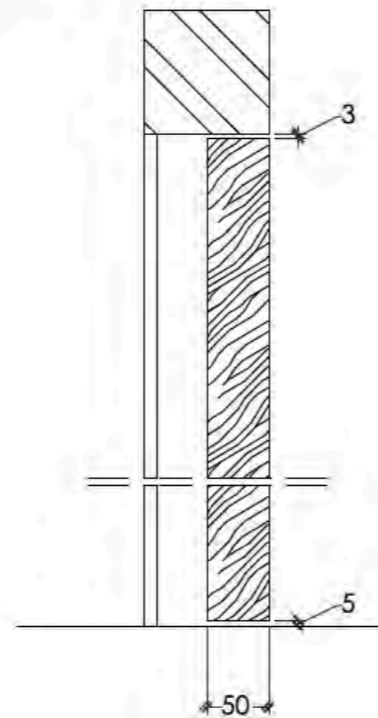
Brushed matt lacquered hollow-core hinged door with inserts with satin or burnished brass finish. Patent magnetic lock.

Brushed matt lacquered doorframe with inserts with satin or burnished brass finish.

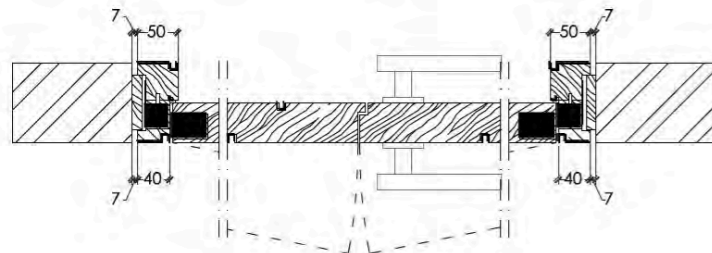
Single leaf door horizontal section



Vertical Section



Double leaf door horizontal section



Custom-made sliding door

Hollow-core sliding doors available in the following versions:

CA 32 SL → Door board veneered in plain wood with metal inserts.

CA 32 SA → Brushed matt lacquered door board with metal inserts.

Nominal dimensions of the board:
Width in cm.: min. 70 - max. 125
Height in cm.: min. 200 - max. 300
Thickness cm. 5

Dimension limits:

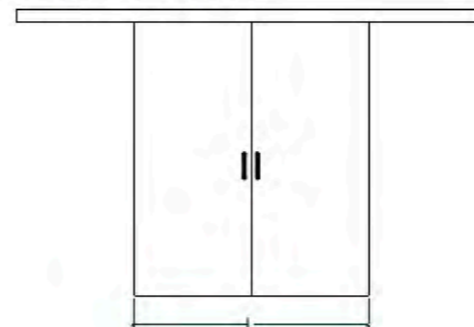
Single leaf door: W min. 70 - max. 125
H min. 200 - max. 300

Double leaf door: W min. 140 - max. 250
H min. 200 - max. 300

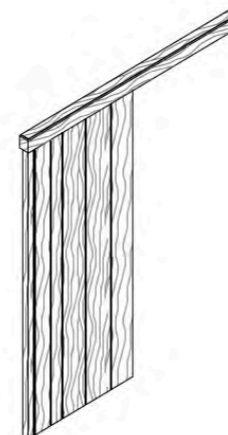
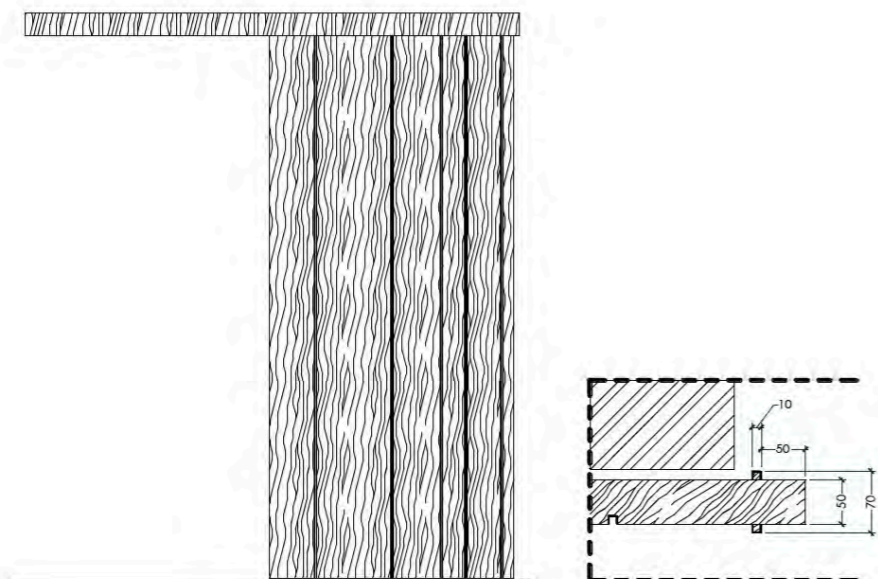
Single leaf door



Double leaf door



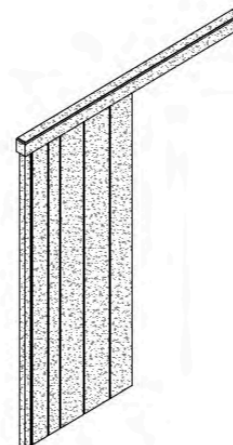
Metal handle with brass finish applied on the panel



Plain wood veneered sliding door

Hollow-core sliding door veneered in plain wood with vertical grain and inserts with burnished or satin brass finish. Handle with satin or burnished brass finish along the full-length of the panel. Aluminium rail with rail cover in the same wood as the door.

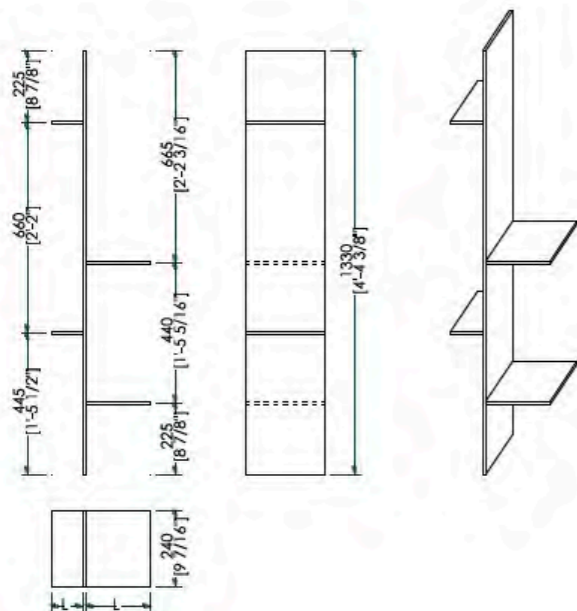
On request, available with doorframe veneered in plain wood with vertical grain.



Brushed matt lacquered sliding door

Brushed matt lacquered hollow-core sliding door with inserts with satin or burnished brass finish. Handle with satin or burnished brass finish along the full-length of the panel. Aluminium rail with rail cover brushed matt lacquered in the same colour as the door.

On request, available with brushed matt lacquered door-frame.



High shelf composition.

Made up of a vertical side panel and 4 horizontal shelves (2 on each side) placed at pre-arranged distances.

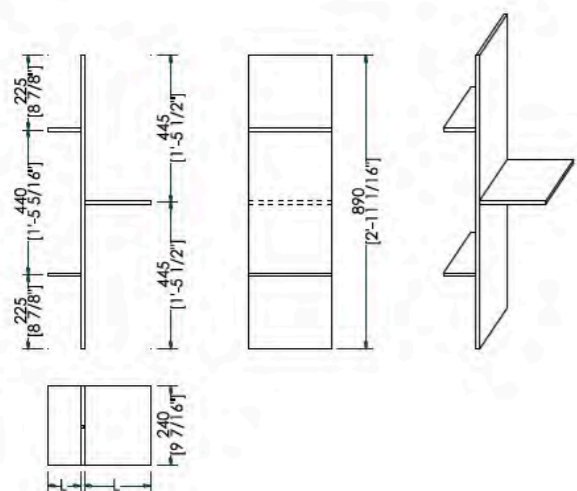
Finishes Available: Satin Brass, Burnished Brass, Wood Veneered or lacquered in any RAL color.

Dimensions in cm.: W 10 + 20 x H 133 x D 24

Dimensions in cm.: W 10 + 40 x H 133 x D 24

Dimensions in cm.: W 15 + 40 x H 133 x D 24

Dimensions in cm.: W 20 + 40 x H 133 x D 24



Low shelf composition.

Made up of a vertical side panel and 3 horizontal shelves placed at pre-arranged distances.

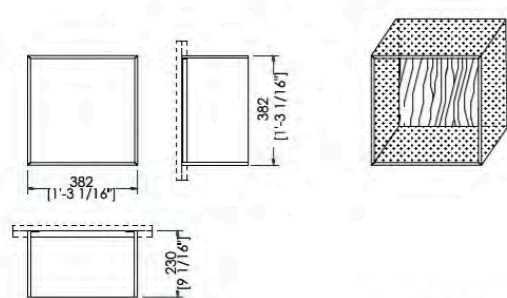
Finishes Available: Satin Brass, Burnished Brass, Wood Veneered or lacquered in any RAL color.

Dimensions in cm.: W 10 + 20 x H 89 x D 24

Dimensions in cm.: W 10 + 40 x H 89 x D 24

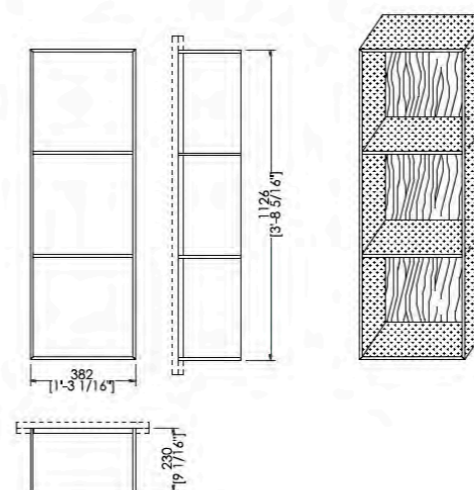
Dimensions in cm.: W 15 + 40 x H 89 x D 24

Dimensions in cm.: W 20 + 40 x H 89 x D 24



Single crystal display case
Crystal display case integrated into the wall panels.
Made of extra-clear glass with wooden back panel in the same finish as the wall panels.

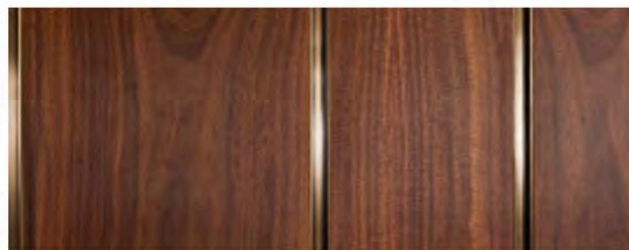
Dimensions in cm.: W 38 x D 23 x H 38



Crystal display case with 3 compartments
Crystal display case integrated into the wall panels.
Made of extra-clear glass with wooden back panel in the same finish as the wall panels.

Dimensions in cm.: W 38 x D 23 x H 112

Line Channels

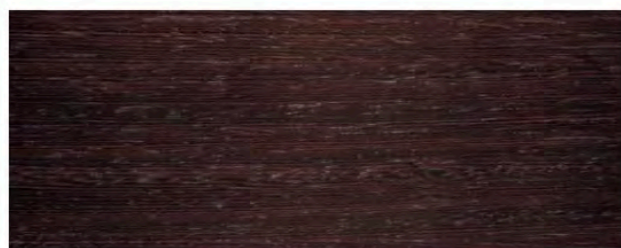


Burnished Brass Channels

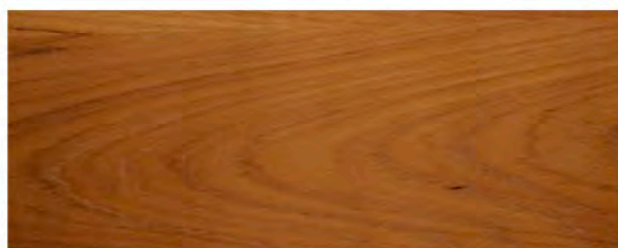


Satin Brass Channels

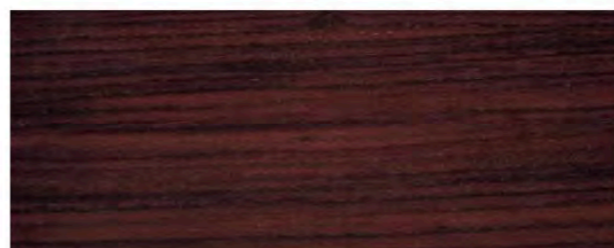
Plain Woods



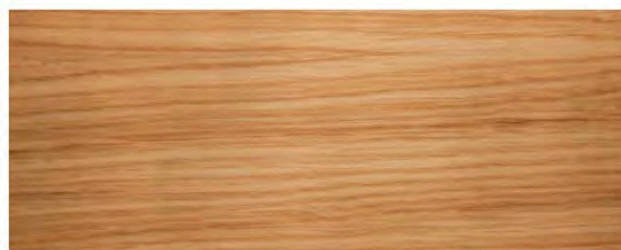
Wenge



Teak



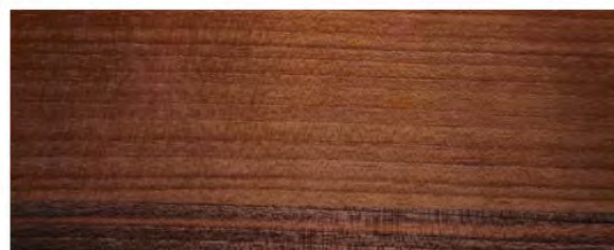
Rosewood



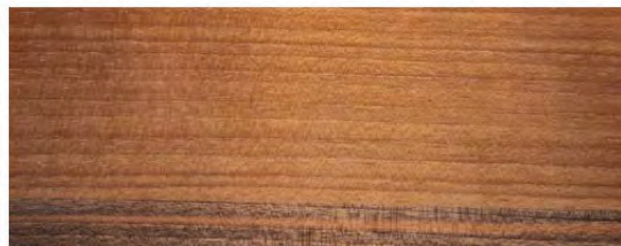
Oak



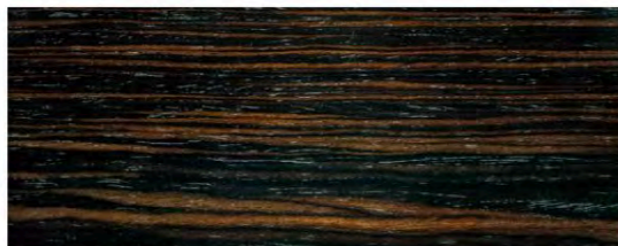
Zebrano



Walnut Canaletto



Walnut



Ebony



Cherrywood



Maple

Brushed Matte Lacquered



RAL 9010



RAL 3012



RAL 5023



RAL 7038

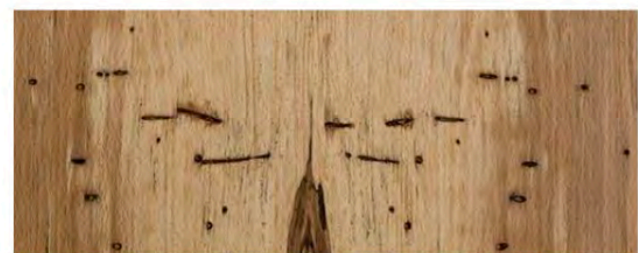


RAL 8019

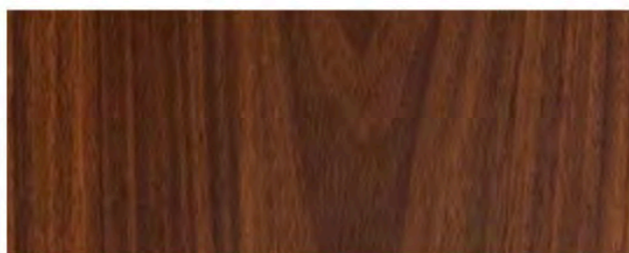


Available in all RAL Colours

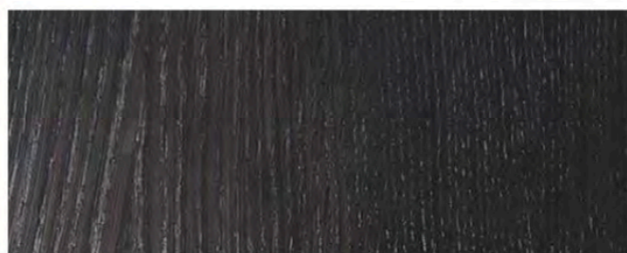
Special Woods



"Faggio Antico"



Rosewood "India"

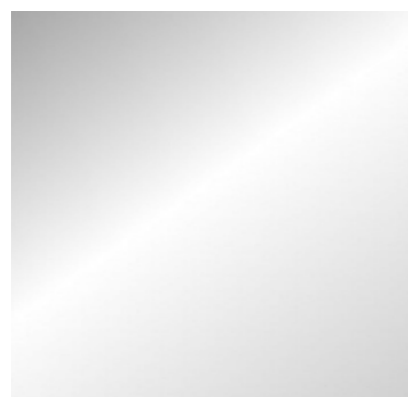


Stone Oak "Carbone"

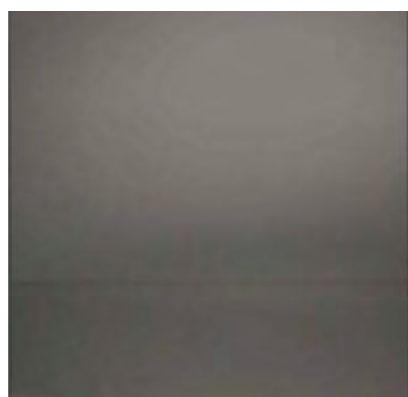


one Oak "Tabacco"

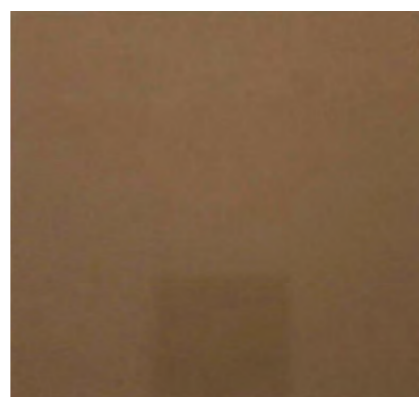
Mirror



Silver



Smoked



Bronze

MATERIA

COLLECTION
LUXURY DECOR AND BESPOKE SOLUTIONS

1060 Kane Concourse, Bay Harbor Islands, FL 33154

www.materiacollection.com | info@materiacollection.com

1-800-849-4953 | 786-438-1330

LAURAMERONI
design . collection

U.S.A HEADQUARTERS