



MATERIA

COLLECTION

LUXURY DECOR AND BESPOKE SOLUTIONS

HARVEY Walk-in System

LAURAMERONI
design . collection



Custom-made walk-in closet system with anodized aluminum structure, shelves and equipment realized in natural wood, RAL matt lacquered or decorated with special finishes. The walk-in closet can be customized in size using the proposed modules, and can be assembled with the various equipment proposed.

Harvey is conceived as a "Global Project" that adapts to any architectural space thanks to the possible combination with wall panels and integrated doors and to the personalization of its internal and external parts.

The Harvey walk-in closet system is composed of several storage modules, including push-pull drawers, open compartments, elements with glass shelves and luminous backdrop.

The Harvey walk-in closet system includes a wide range of accessories including a precious round rotating mirror that can become a support surface covered in leather.





Harvey is an elegant and innovative walk-in closet system designed to integrate with Laurameroni doors and wall panels solutions.

Every construction detail is visible and particular attention has been paid to the finishing of the internal equipment available, designed to satisfy the aesthetics and functionality of a refined and elegant storage system.

All backdrops are made of finished panels mounted directly on the wall, the internal equipment is hooked onto burnished metal structure and the sides are used only in the presence of integrated doors and exclusively at the beginning and end of the composition.

The LED lighting system has been designed to hide behind the containment elements. The leather accessories are made in perfect harmony with the wooden elements.

Harvey combines the freedom of composition of the walk-in closet with the functionality of closing with doors or with integrated doors creating a "continuum" between open and closed spaces.

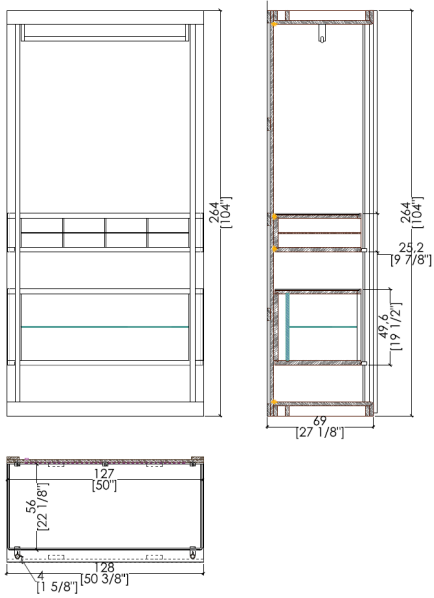




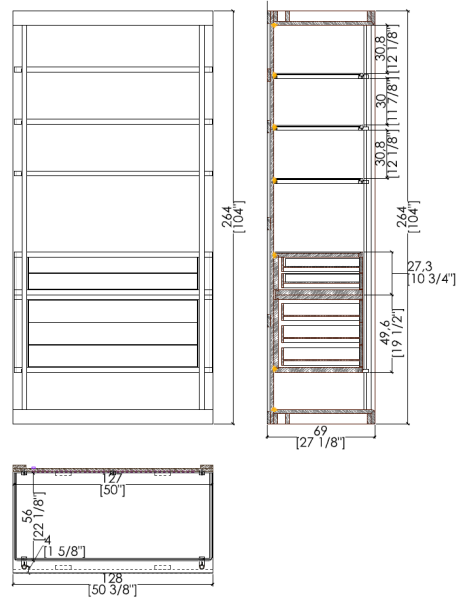
CABINET MODULES

LED Lighting strips included

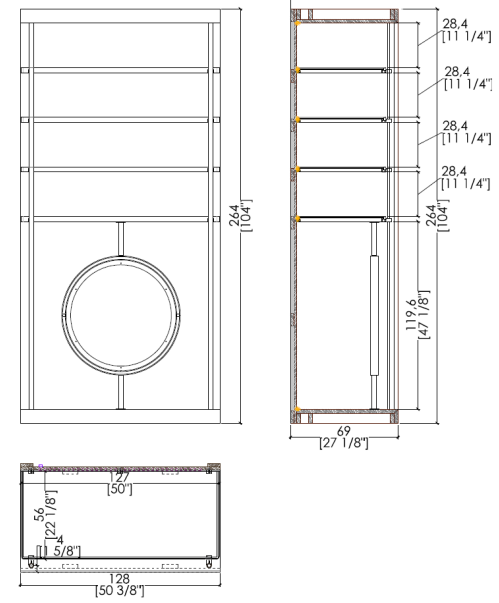
Element A



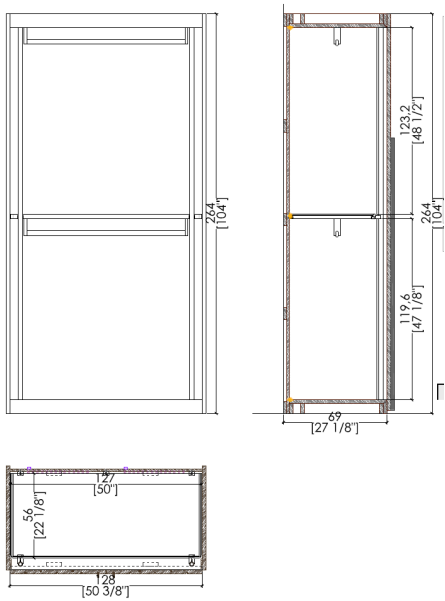
Element B



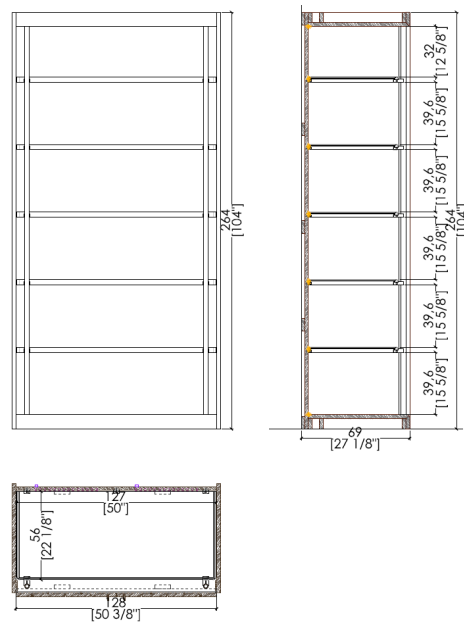
Element C



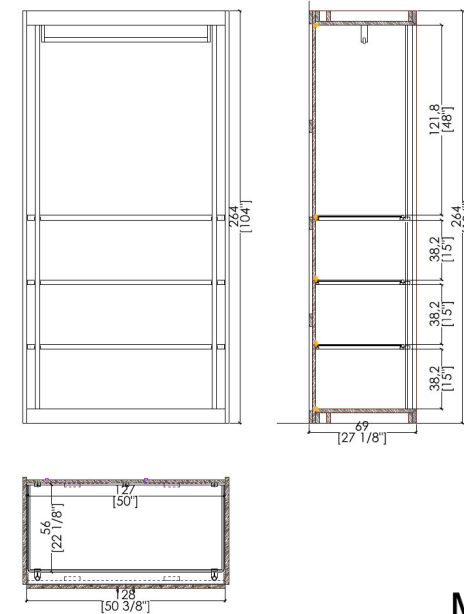
Element D



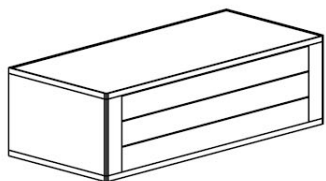
Element E



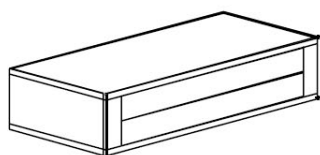
Element F



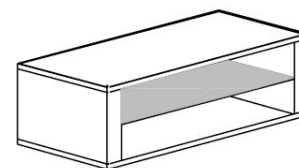
component



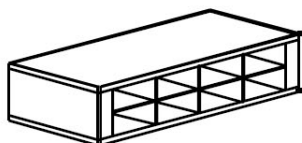
3 drawers



2 drawers



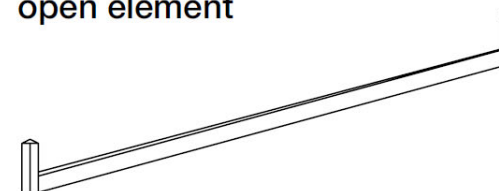
open element



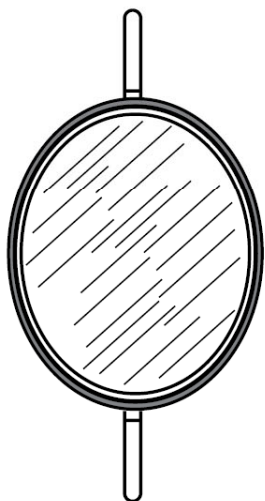
pigeonhole



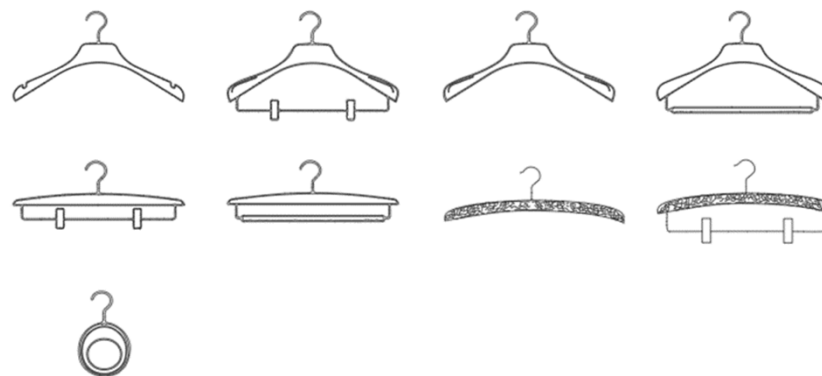
shelf



hanging rails

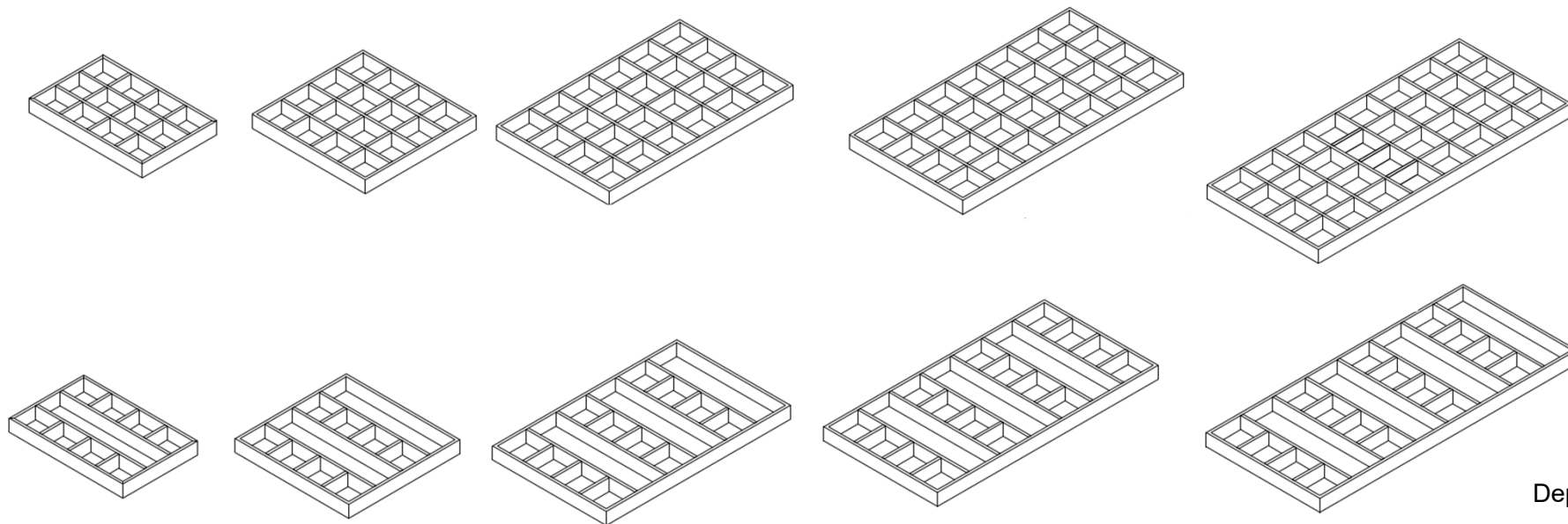


spinning mirror



hangers

Wooden Tie and Belt rack



Width : 13 3/8"

Width : 19 1/4"

Width : 31 1/8"

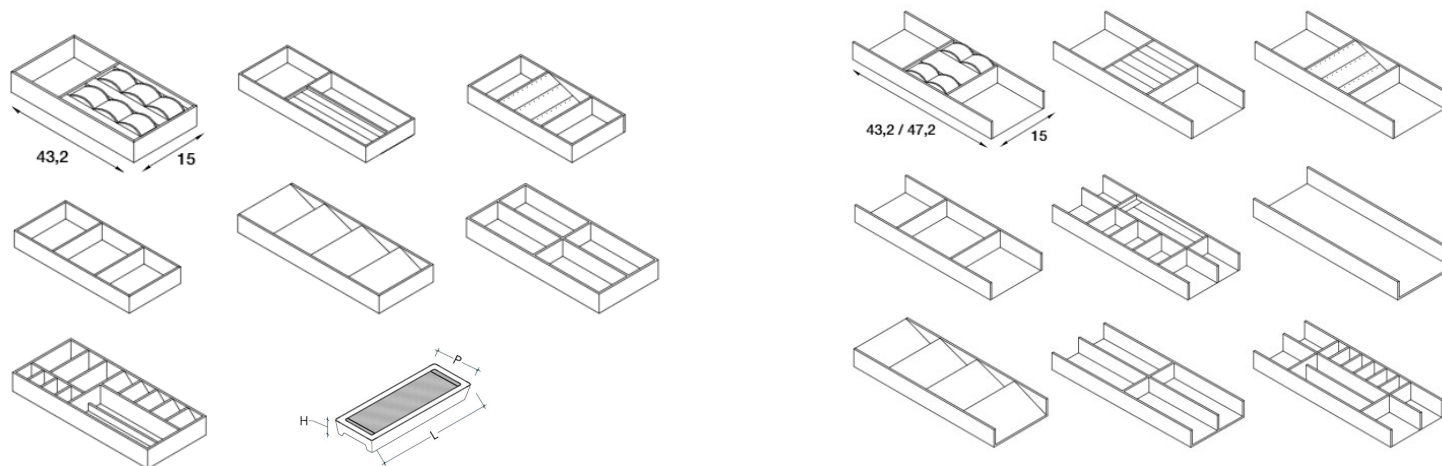
Width : 37"

Width : 42"

Depth: 19 5/8"

Height: 2"

Jewelry / Trays / Perfumer



Modules Structure



Brown



Gold

Brushed Matte Lacquer



RAL 9010



RAL 3012



RAL 5023



RAL 7038



RAL 8019



Available in all RAL Colours

Plain Woods



Maple



Oak



Cherrywood



Teak



Zebrano



Walnut



Walnut Canaletto



Dyed Walnut Canaletto



Ebony



Termocotto Oak



Rosewood



Wenge



Aniline Dyed

Liquid Velvets



Liquid Velvet "Nocciola Beige"



Liquid Velvet "Testa di Moro"



Liquid Velvet "Rosso Borgogna"



Liquid Velvet "Canna di Fucile"



Liquid Velvet "Nero Melange"

MATERIA

COLLECTION
LUXURY DECOR AND BESPOKE SOLUTIONS

1060 Kane Concourse, Bay Harbor Islands, FL 33154

www.materiacollection.com | info@materiacollection.com

1-800-849-4953 | 786-438-1330

LAURAMERONI
design . collection

U.S.A HEADQUARTERS