



# MATERIA --- COLLECTION

LUXURY DECOR & BESPOKE SOLUTIONS

DRAPE SOFA

---

LAURAMERONI  
design . collection



Sofas entirely made of precious and exclusive leathers and offered in two sizes (220 cm/86 5/8" and 280 cm/110 3/8") that enhance the comfortable and contemporary design.

The design of the "Meir" sofa takes its inspiration from the female accessory par excellence: the bag. The structural details (such as the thin and rigid shell upholstered in leather that embraces the seats and the backrests) and the purely aesthetic details (such as the visible hinges and the handles placed on the sides) connote its personality and enhance the originality of the design of this sofa.

The careful and meticulous finishing of all the details of this sofa expresses the consolidated sartorial mastery of our craftsmen.





A sophisticated and contemporary design characterized by an external structure that embraces and encloses the ample and comfortable seats.

The distinctive element of the zipper reveals the meticulous attention to detail of the sartorial upholstery when opened.

The refined elegance of the curvilinear silhouette of the structure is perfectly integrated with the harmonious proportion of the padding.

The combination of different fine leathers highlights the rounded lines and even better defines its volume.

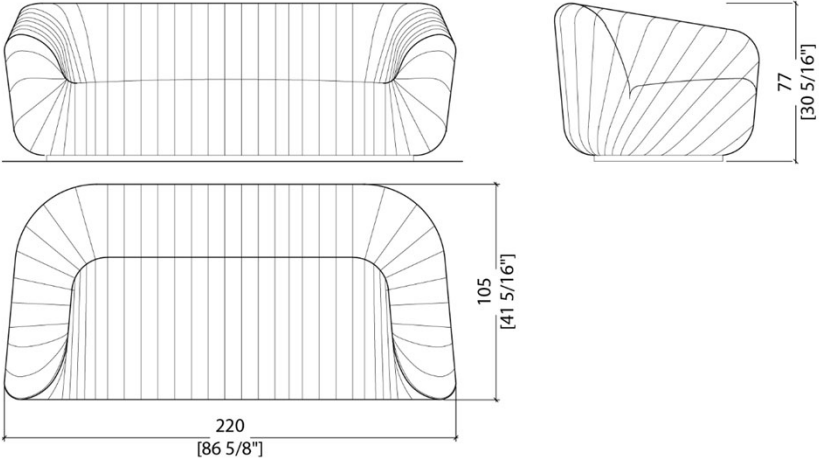
The elegant "cover" that houses the seats becomes a highly aesthetic point of strength and allows the sofa to be positioned even in open living spaces and in the center of a room.

With its natural elegance, "Meir" is perfect for sophisticated residential living interiors.

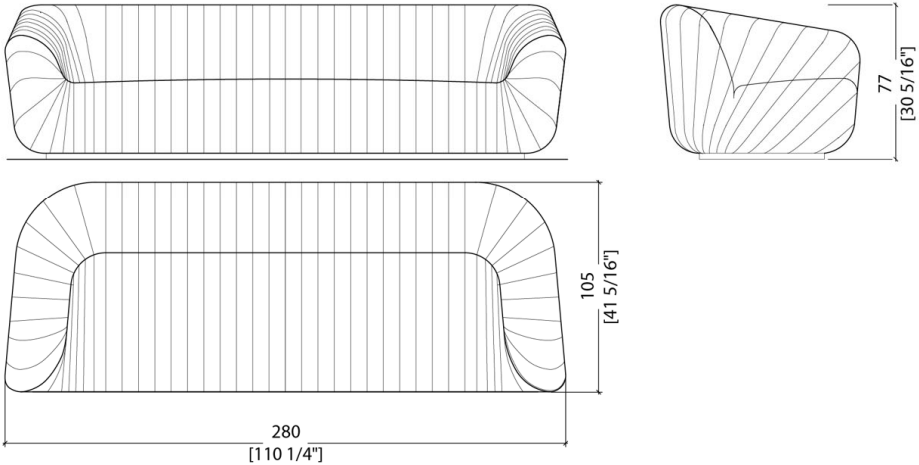
The "Meir" sofa has been conceived in the version completely covered in leather to enhance a noble and precious material that is always different and irreproducible, perfect in the imperfection t



2 seats



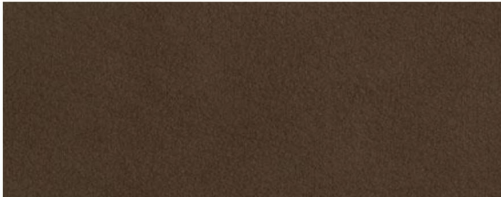
3 seats



NUBUCK



Nubuck 2118



Nubuck 2133



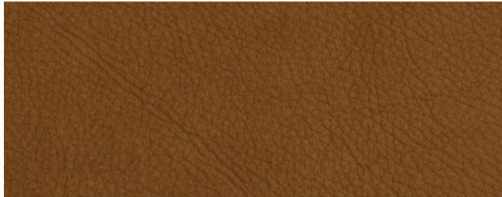
Nubuck 2132



Nubuck 2115



Nubuck 2105



Nubuck 2103



Nubuck 2102



Nubuck 2101



Nubuck 2100

PIXEL LEATHERS



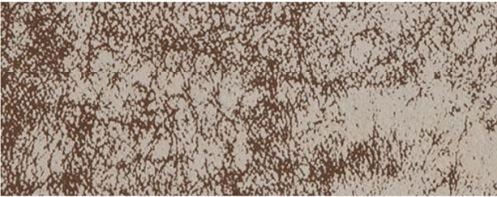
Pixel Antracite



Pixel Guacamole



Pixel Vino



Pixel Nocciola

SKIN LEATHERS



Skin Ebony



Skin Garnet



Skin Marble



Skin Mud



Skin Night



Skin Rust

SWING LEATHERS



Swing 4507



Swing 4501



Swing 4502



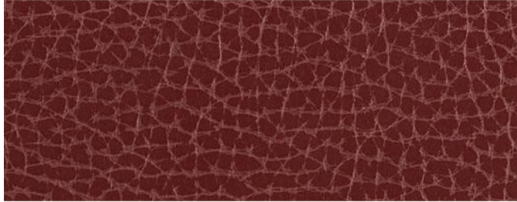
Swing 4503



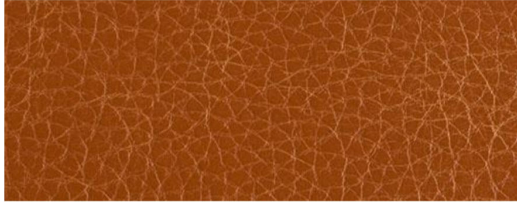
Swing 4504



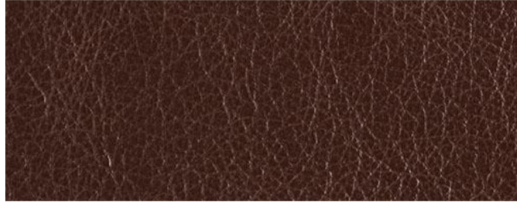
TOSCA LEATHERS



Tosca Bordeaux



Tosca Cognac



Tosca Marrone



Tosca Testa di Moro

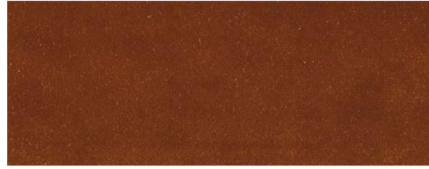
VELVETS



407



417



403



412



438



418



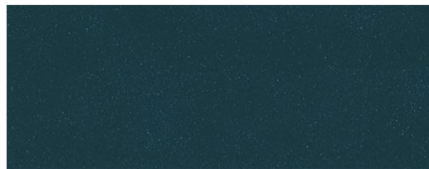
405



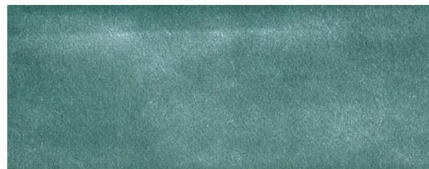
401



431



429



409



404



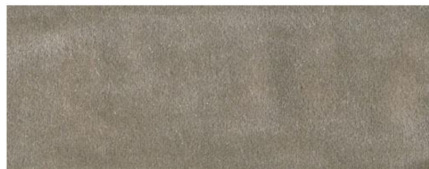
414



413



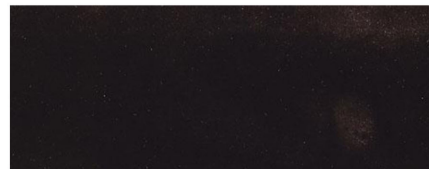
424



437



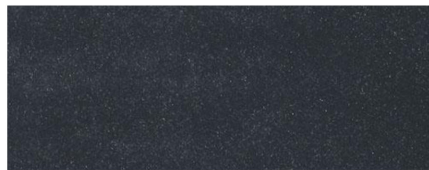
457



477



487



415



406

# MATERIA

---

COLLECTION  
LUXURY DECOR AND BESPOKE SOLUTIONS

1060 Kane Concourse, Bay Harbor Islands, FL 33154

[www.materiacollection.com](http://www.materiacollection.com) | [info@materiacollection.com](mailto:info@materiacollection.com)

1-800-849-4953 | 786-438-1330

LAURAMERONI  
design . collection

U.S.A HEADQUARTERS