



**MATERIA** 

---

COLLECTION  
LUXURY DECOR AND BESPOKE SOLUTIONS

Art Collection - Silenzio

---

**LAURAMERONI**  
design ■ collection

## INSTARSIA COLLECTION

Thanks to the collaboration with well-known artists and designers, we created a collection of furniture deserving the status of art products.

The ancient inlay technique, the extreme ability of our craftsmen and the creative inspiration of our artists fuse together: the result is a collection characterized by a timeless beauty and inspired by the desire to create ambitious products.

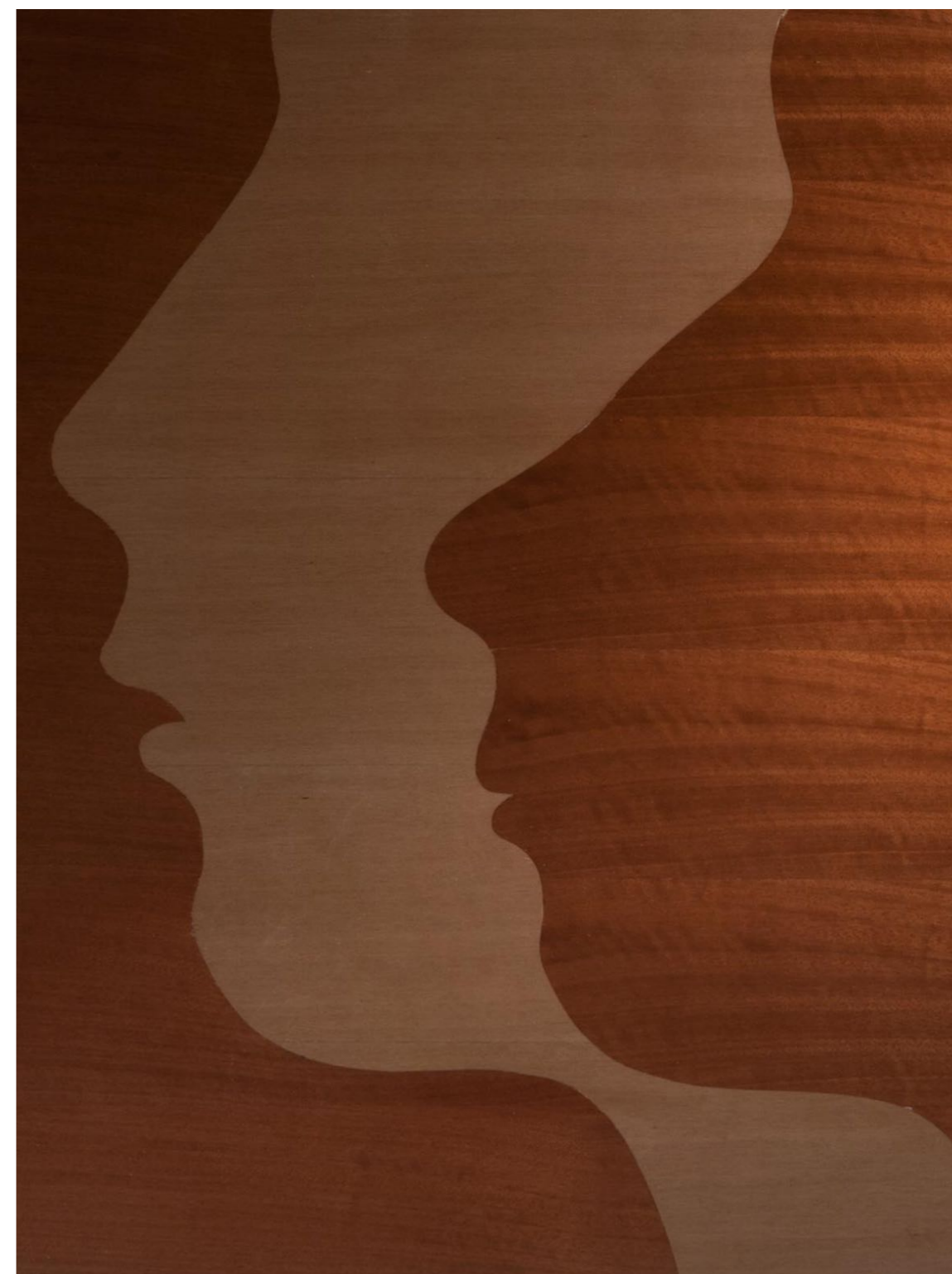
Intarsia Collection revives the local tradition of this ancient inlaying technique: a collection of sideboards designed to be reproduced only in numbered specimens, signed, and certified by the author and by the craftsman.

These sideboards are design furniture turned into paintings. "Intarsia" represents a direct contact with raw materials which take shape through manual ability and scrupulous dedication, reinvented by imagination and direct experience with wood.

# SILENCIO

project by Robert Hromec

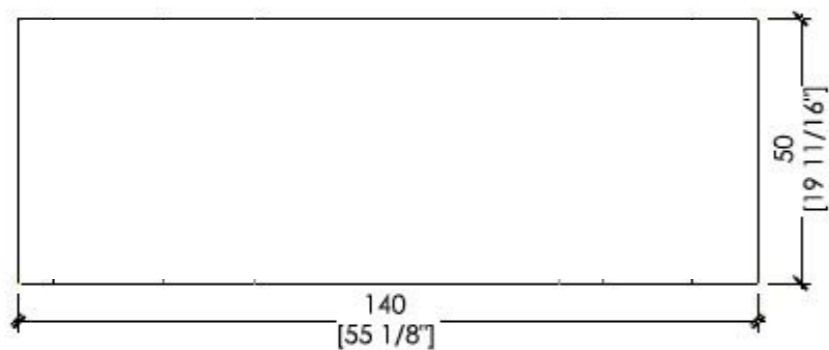
INSTARSIA 3



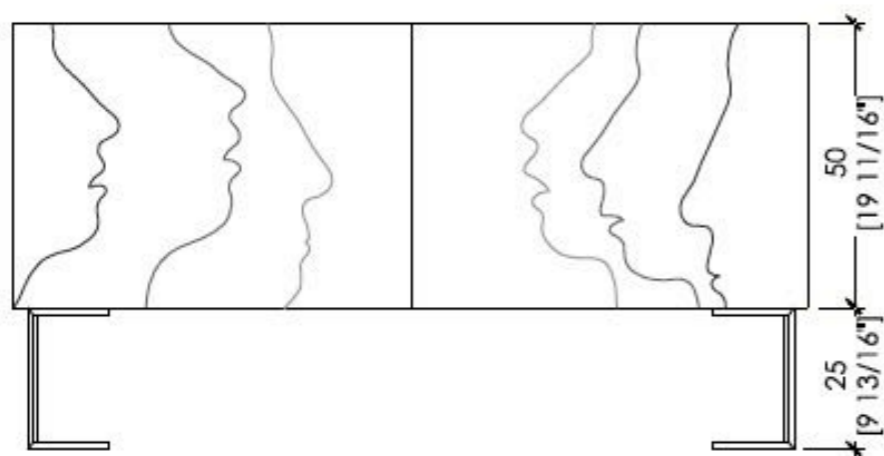
Thanks to the ancient art of wood inlays the outlines of the faces create a 3D effect of light and shadow and transforms the Silenzio sideboard into a unique piece of art. There are many ways to make meaningful and sophisticated pieces of furniture. To be different is to be unique. The technique should be only a means to an end. Among the most appealing aspects of Intarsia is the directness and swiftness of creating an image of incredible power and aesthetic strength.

With the use of different dyed veneers, the artist made a particular colored impression, and so affected the way we perceive the piece. You can listen to silence and learn from it. It has a quality and a dimension all its own. Silence is a source of great strength and a journey of discovery at the same time. It gives meaning to our time. Be different. Be unique. Be silenzio.

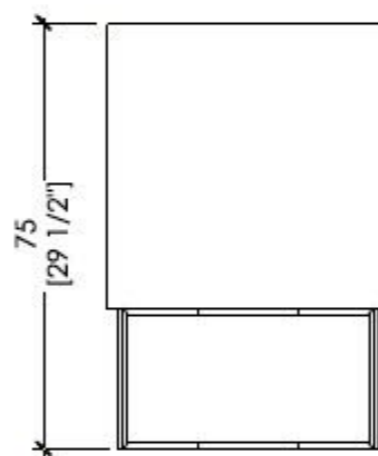
## DIMENSIONS



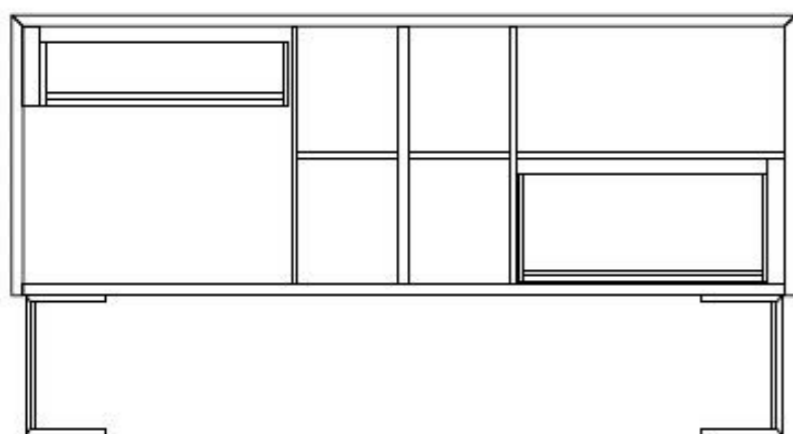
Plan view



Front view



Side View



Section



Sideboards "Instarsia 3"

Reproduced only in  
21 numbered specimen

Door and structure with inlays.  
Sideboard with "instarsia 3" legs in  
banished brass.

Door with push-pull opening system.

Fitted with 2 internal drawers and one  
shelf.

Special dimensions are NOT available.

Dimensions:

W55" 1/8 x D19" 11/16 x H29" 1/2

# SILENCIO

project by Robert Hromec

## ABOUT THE DESIGNER



**Robert Hromec** (1970) received his MFA degree in painting from Hunter College in New York (1998) and his BA degree in printmaking from The City College of New York (1995). He studied fine arts at the Pratt Institute (1990–91); was a teaching assistant in the Department of Painting at Hunter College (1997–98); and worked at New York’s Metropolitan Museum of Art (1992–1998). During his eight-year stay in New York City, Hromec experimented with mixing various art techniques to achieve his unique art language, which he calls “printpainting.” In 2010, the Danubiana Meulensteen Museum of Art published the monograph “Twenty Years” dedicated to Hromec’s work from 1990–2010. In December 2013, Cantor Art Press New York published the book “Robert Hromec: New Mixed-Media Paintings on Aluminum Plate”.

# MATERIA

---

COLLECTION  
LUXURY DECOR AND BESPOKE SOLUTIONS

1060 Kane Concourse, Bay Harbor Islands, FL 33154

[www.materiacollection.com](http://www.materiacollection.com) | [info@materiacollection.com](mailto:info@materiacollection.com)

1-800-849-4953 | 786-438-1330

LAURAMERONI  
design . collection

U.S.A HEADQUARTERS